



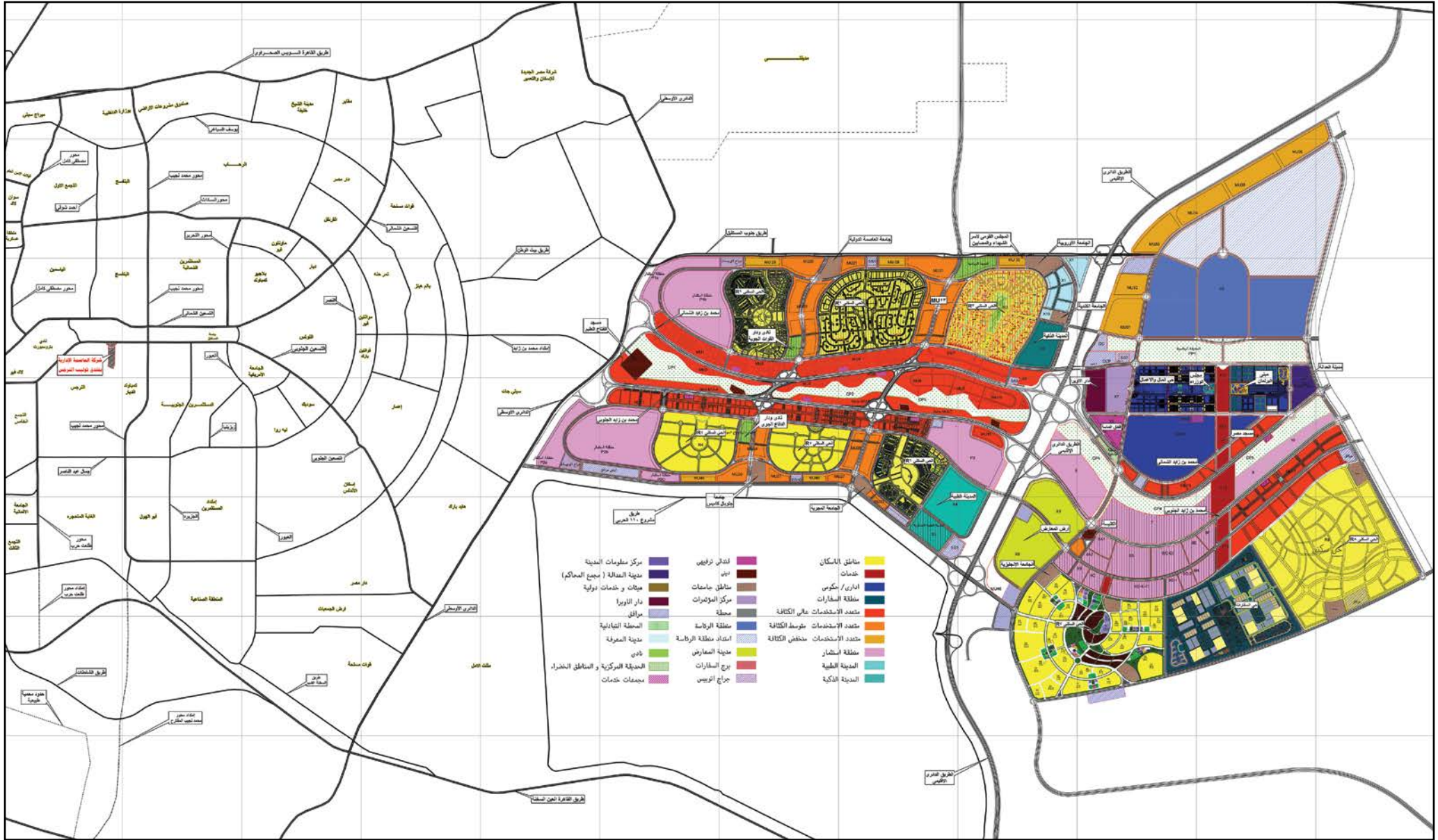
THE JUNGLE
NEW CAPITAL
INVESTMENT DISTRICT

PART OF CAPITAL HEIGHTS 1 COMPOUND



NEW CAPITAL

العاصمة الإدارية





CAPITAL HIEGHTS 1 LOCATION

Capital Heights 1 is one of SUD residential projects at The New Administrative Capital Built on the principles and Innovative concepts of smart residential life on an area of 50 acres. Capital Heights 1 provides a wide range of services and recreational areas that guarantees a perfect life to all family memebers.

Capital Heights 1 is strategically located in the heart of The New Administrative Capital, The city is set to be fully serviced, making it the perfect place to reside in the near future. Moreover, Capital Heights 1 is provided with a world-class security system for the safety and security of every single member of your family.

موقع كابيتال هايتس ١

كابيتال هايتس ١ هو أحد مشاريع شركة الصقوة للتطوير العمراني في العاصمة الإدارية الجديدة , يتم بناءه على أسس ومفاهيم الحياة السكنية الذكية بمساحة ٥٠ فدان , ويوجد به العديد من الخدمات والمناطق الترفيهية التي تضمن الحياة المثالية لكافة أفراد الأسرة . يتميز الكمبوند بالموقع الرائع لوجوده في قلب العاصمة الإدارية الجديدة, حيث توجد أفضل الخدمات التي تجعل منها المنطقة المثالية للسكن في المستقبل, كما أننا لم نغفل أهمية تزويد كابيتال هايتس ١ بأحدث أنظمة المراقبة حرصاً على سلامة كل فرد في العائلة .



MASTER PLAN GROUND FLOOR





MASTER PLAN

TYPICAL FLOOR





THE JUNGLE MASTER PLAN



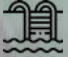


**LANDSCAPE
TOTAL AREA
7300 m²**

 **JUNGLE HOUSE**

 **KIDS POOL**

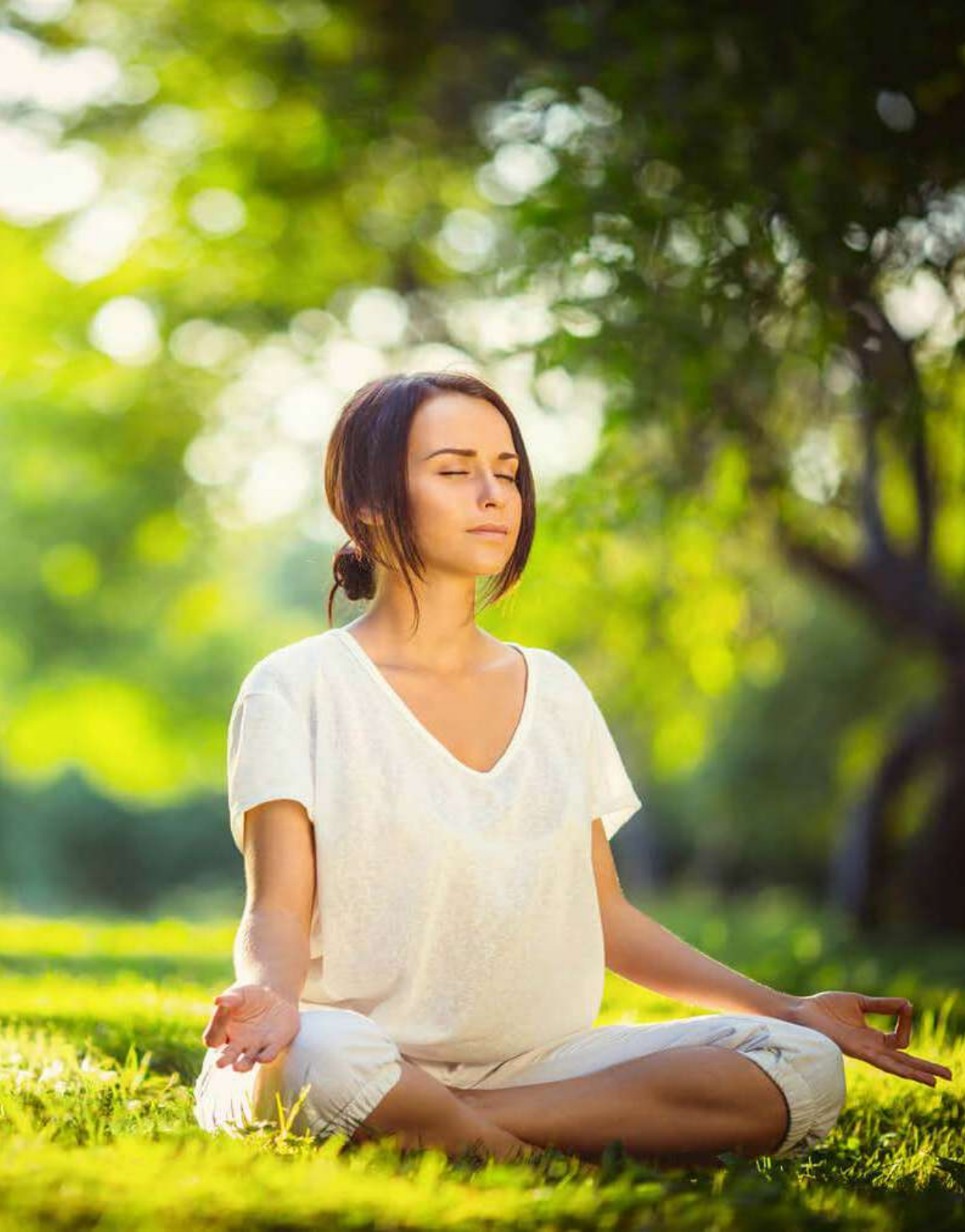
 **KIDS AREA**

 **ADULTS POOL**





THE JUNGLE



Go Cycling and Run

If you are a big fan of sports, loves to commute by bicycle, or can't start the day without running, Go find the tracks in the Jungle House, and do what you love.

مارس هوايتك المفضلة
إذا كنت من هواة الجرى أو ركوب الدراجات, استعد للسباق فى ممرات
وأماكن خاصة لممارسة هوايتك المفضلة فى JUNGLE HOUSE.

Green Spaces

The Jungle offers you landscapes and green spaces, allowing you to communicate directly with nature and tranquility, with green spaces shaded by trees and scenic views.

مساحات خضراء
تقدم لك THE JUNGLE مناظر طبيعية ومساحات خضراء مما يتيح لك
التواصل المباشر مع الطبيعة والهدوء, حيث تحتوى على مساحات خضراء
مظللة بالأشجار والمناظر الخلابة.



Swimming Pools

Retreat to a floating paradise where shimmering pools invite you to relax while enjoying a good read or simply take a refreshing dip to rejuvenate after a long day at work.

حمامات سباحة
العودة إلى الجنة العائمة، حيث تدعوك حمامات السباحة المتلألئة
للاسترخاء بعد يوم طويل ومتعب في العمل.

The Blue Mind Effect

Studies have shown that being near, in, on, or underwater makes people happier, more connected, and better at what they do.

كن دائم السعادة
أثبتت الدراسات الحديثة بأن الشعور بالسعادة الدائمة وعدم التأثير بأي
سلبيات من الخارج يرتبط بشدة بتواجد الإنسان بجانب المياه، لذا أنت دائماً
سعيد في منطقة THE JUNGLE





THE JUNGLE

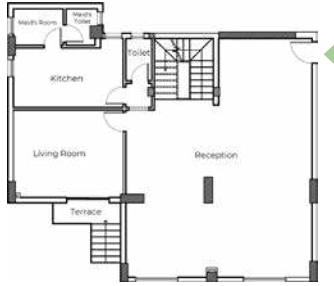


TYPE A
(SPACE ONLY)

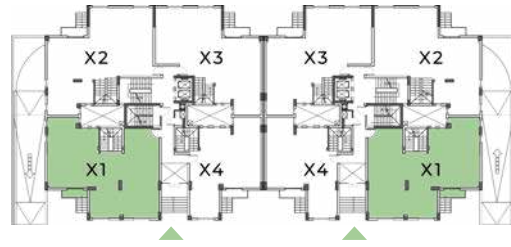
THE JUNGLE



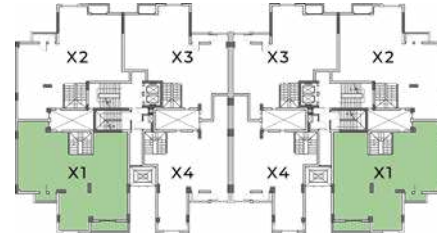
Unit X1 - Duplex
Total Area 430 m²



Proposal Design



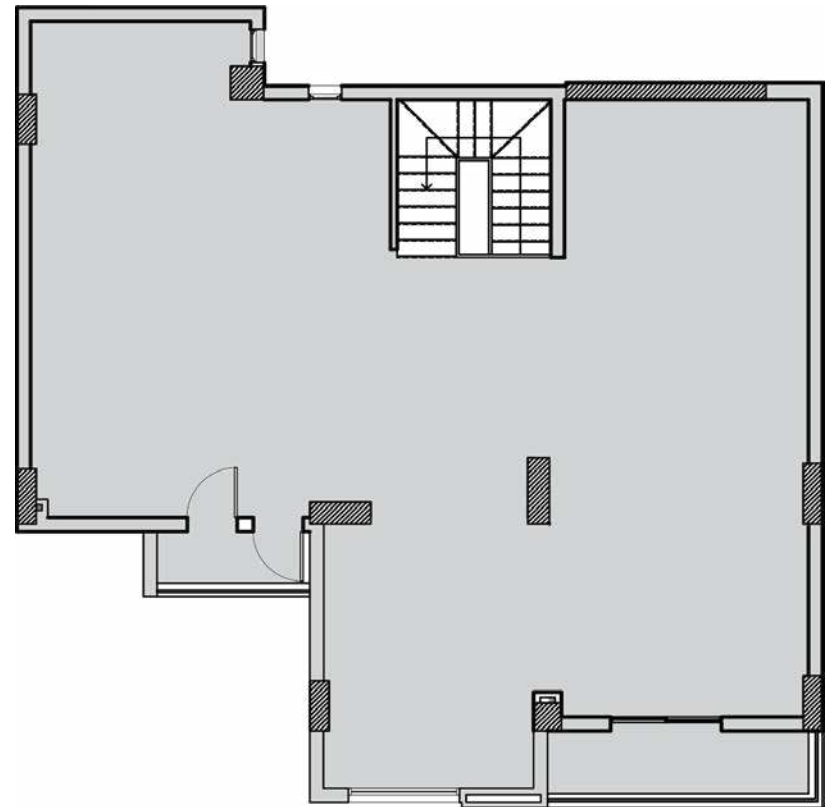
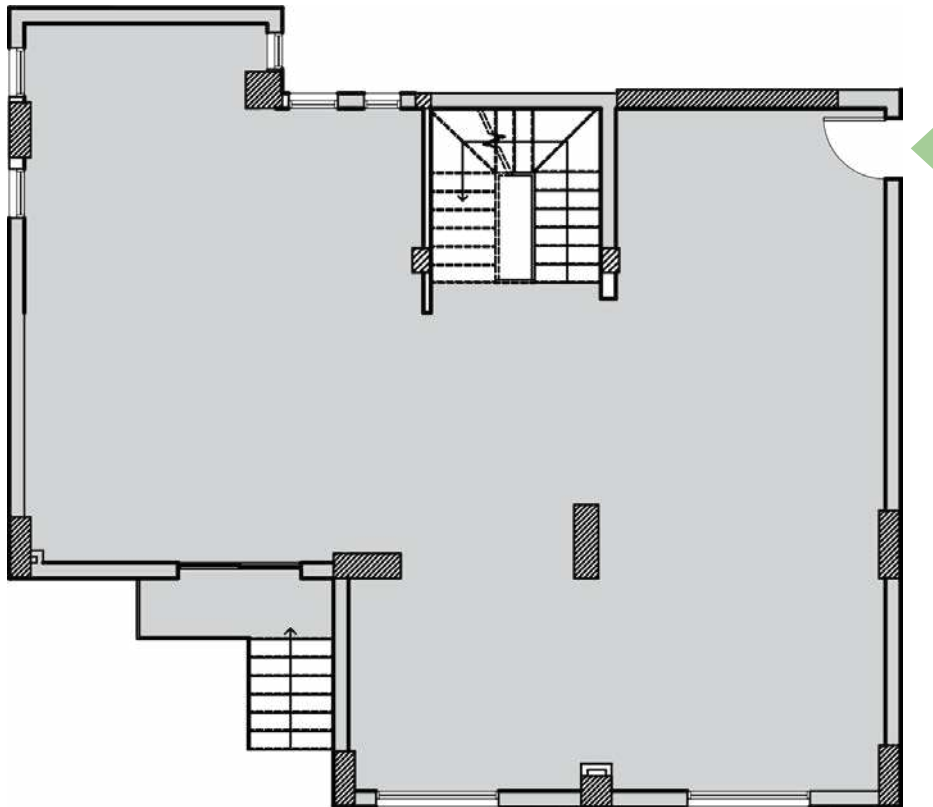
Ground Floor



First Floor



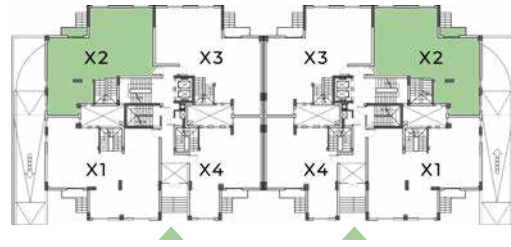
Proposal Design



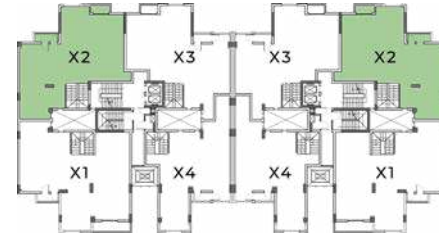
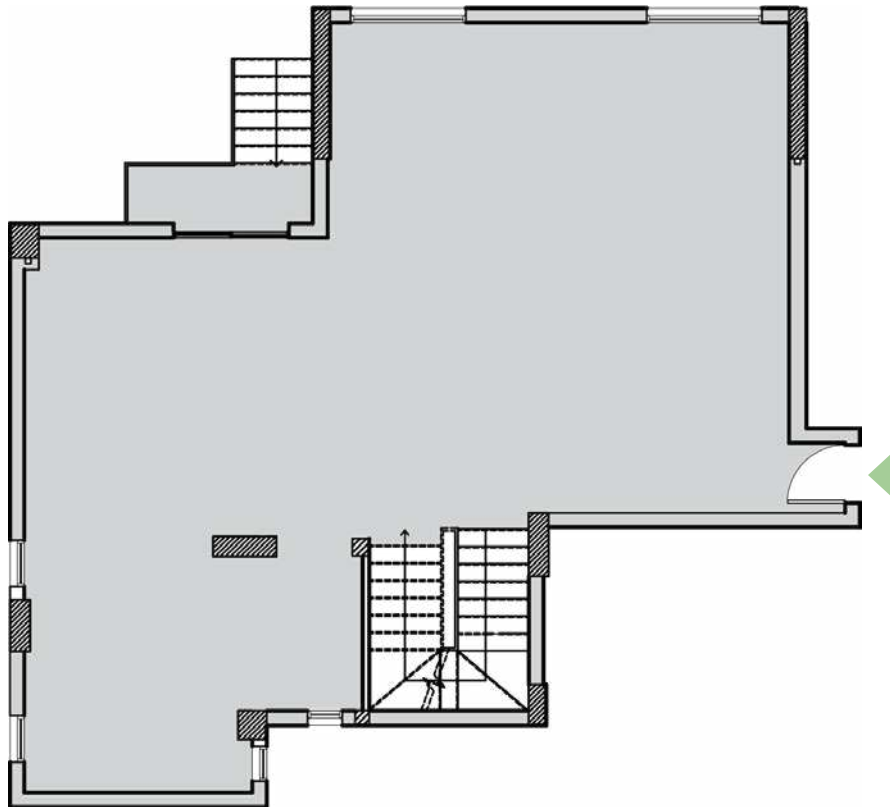
Unit X2 - Duplex
Total Area 400 m²



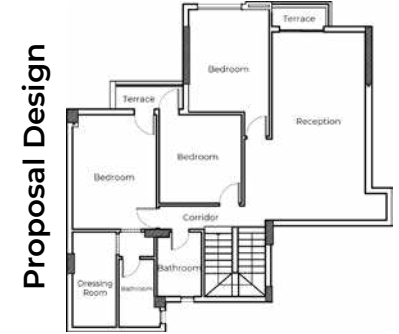
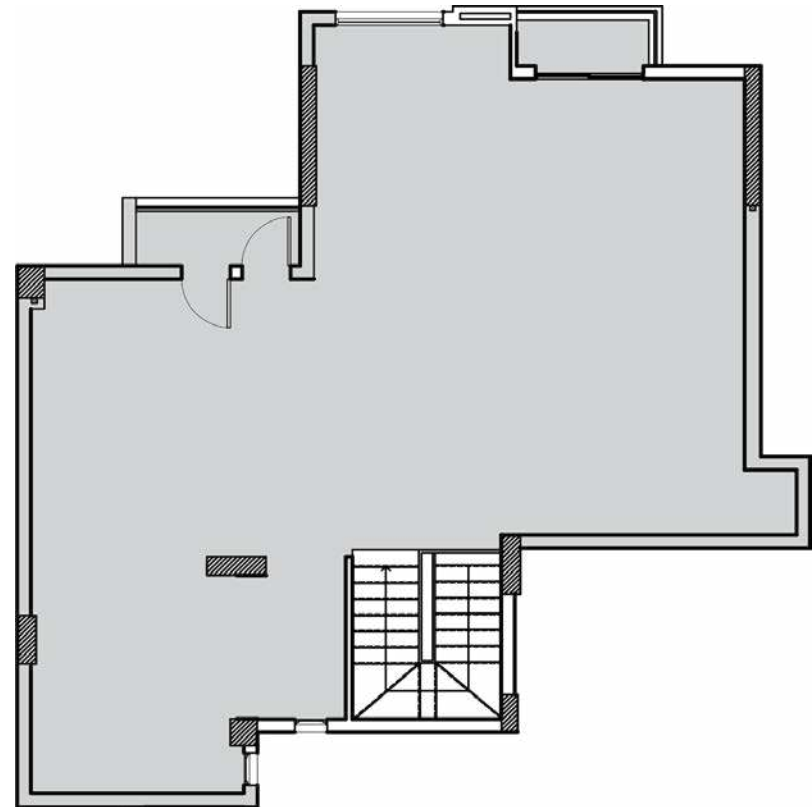
Proposal Design



Ground Floor



First Floor

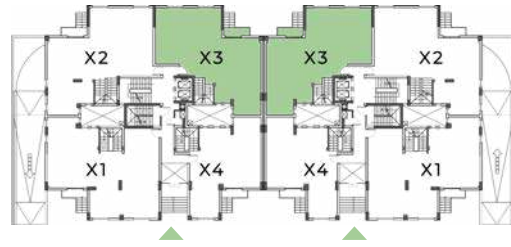


Proposal Design

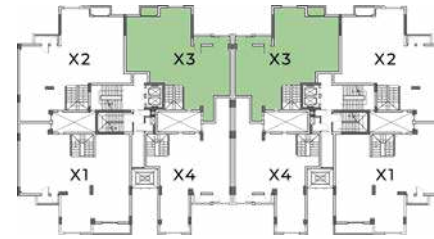
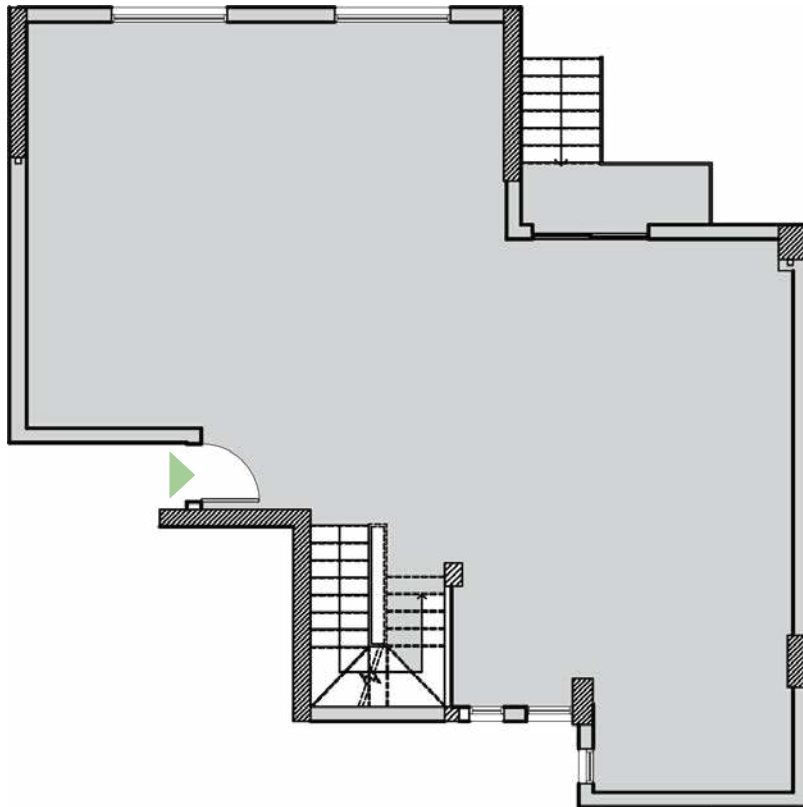
Unit X3 - Duplex
Total Area 370 m²



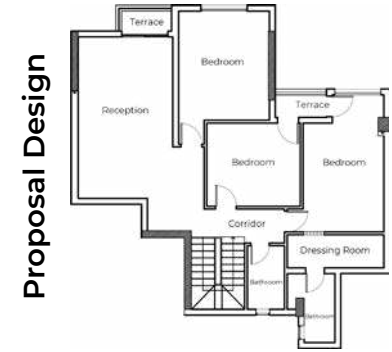
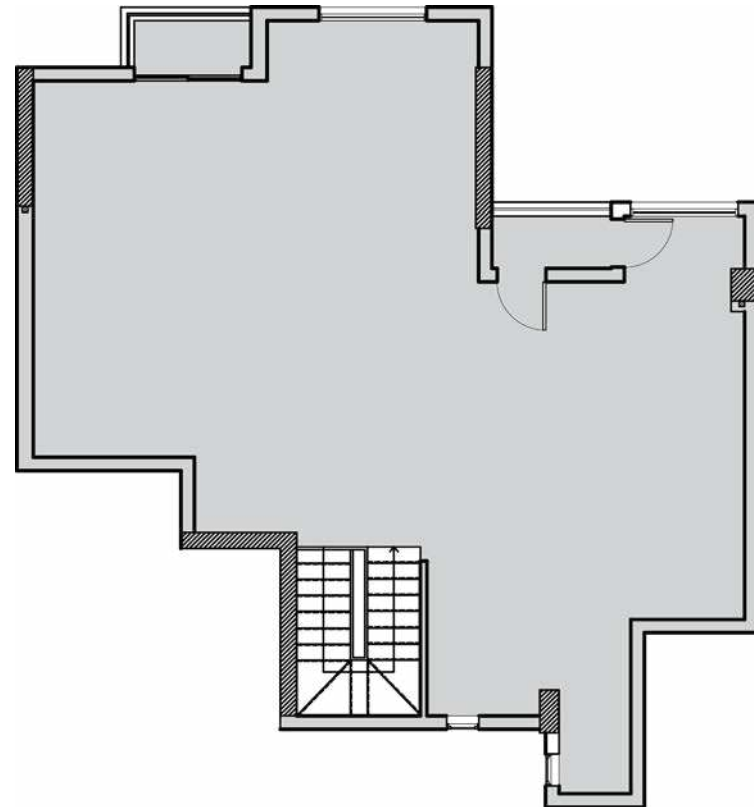
Proposal Design



Ground Floor

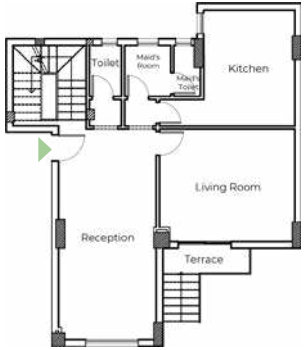


First Floor

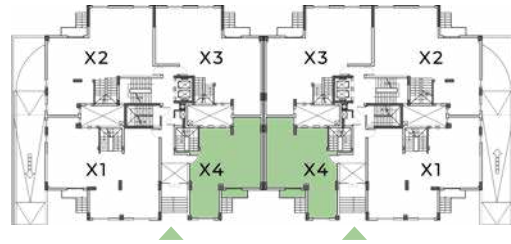


Proposal Design

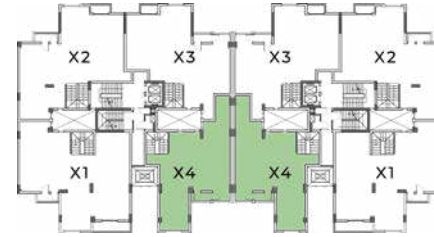
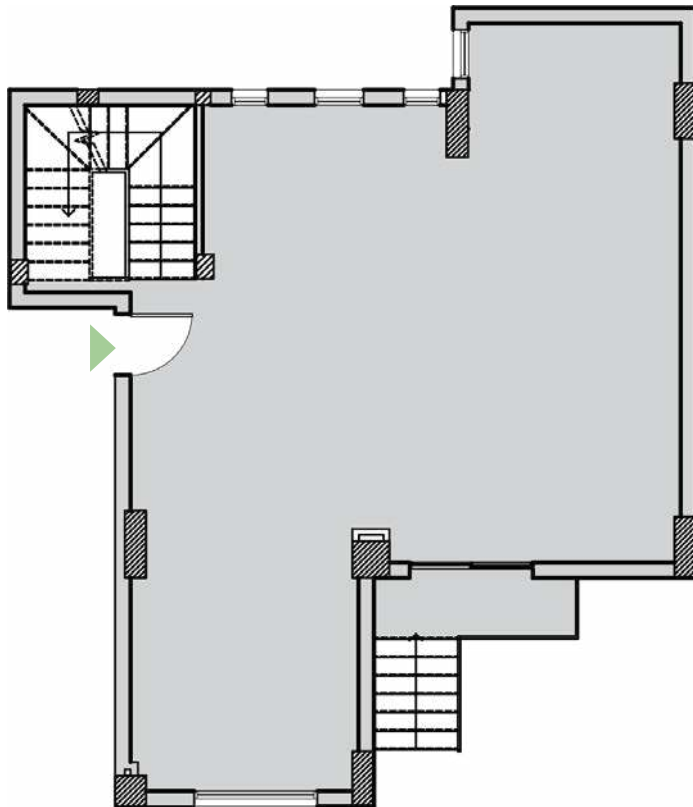
Unit X4 - Duplex
Total Area 305 m²



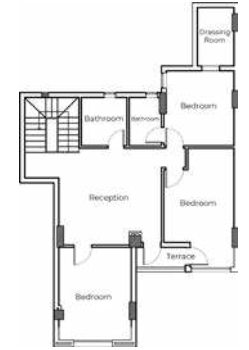
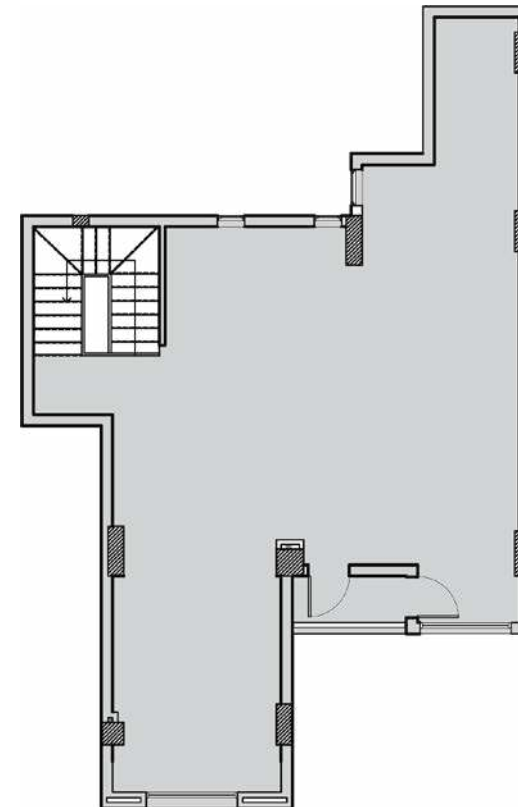
Proposal Design



Ground Floor



First Floor

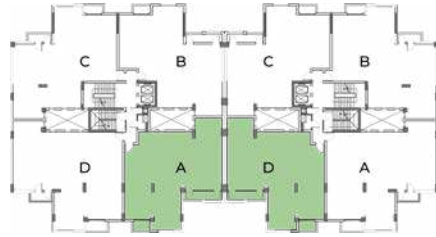


Proposal Design

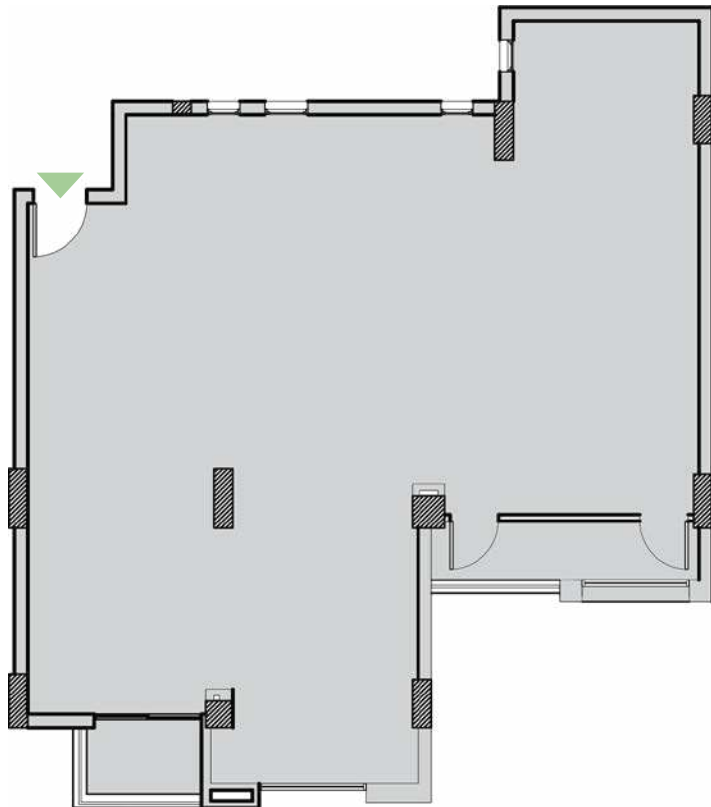


THE JUNGLE

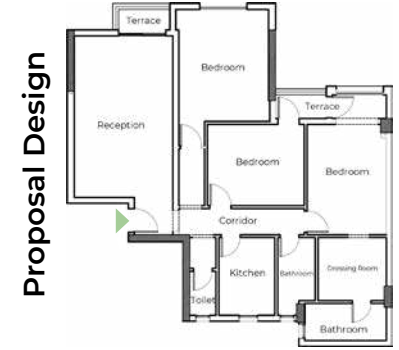
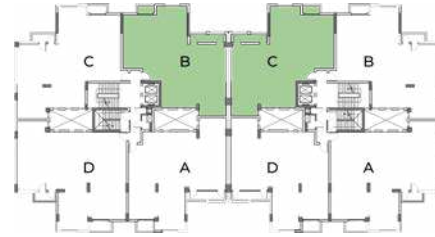
Unit A & D - Typical
Total Area 200 m²



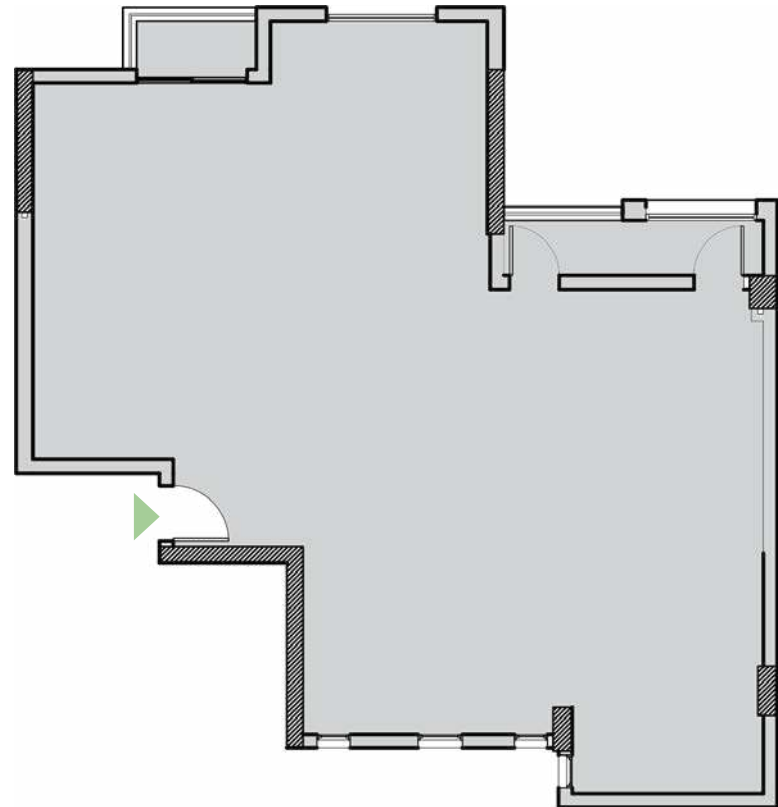
Proposal Design



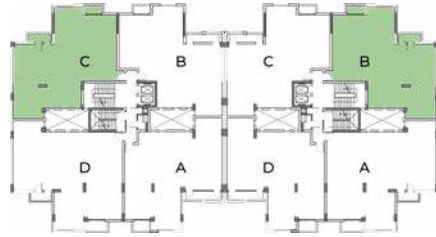
Unit B & C - Typical
Total Area 195 m²



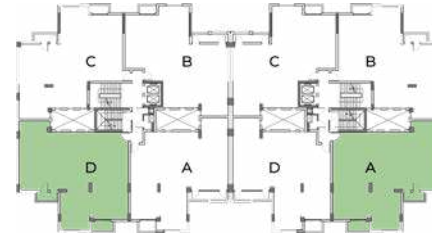
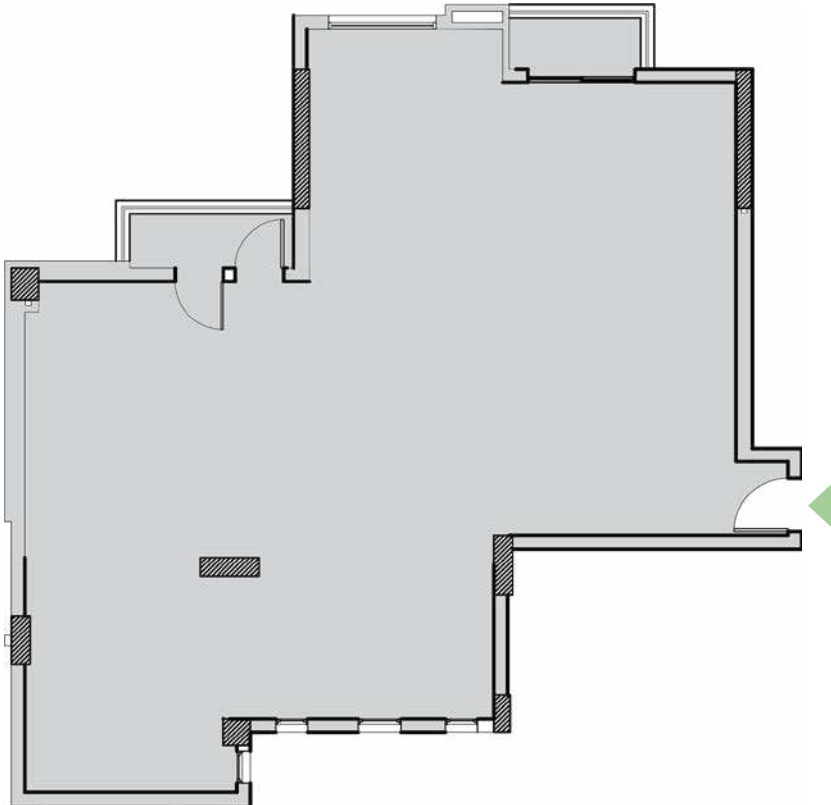
Proposal Design



Unit C & B - Typical
Total Area 200 m²



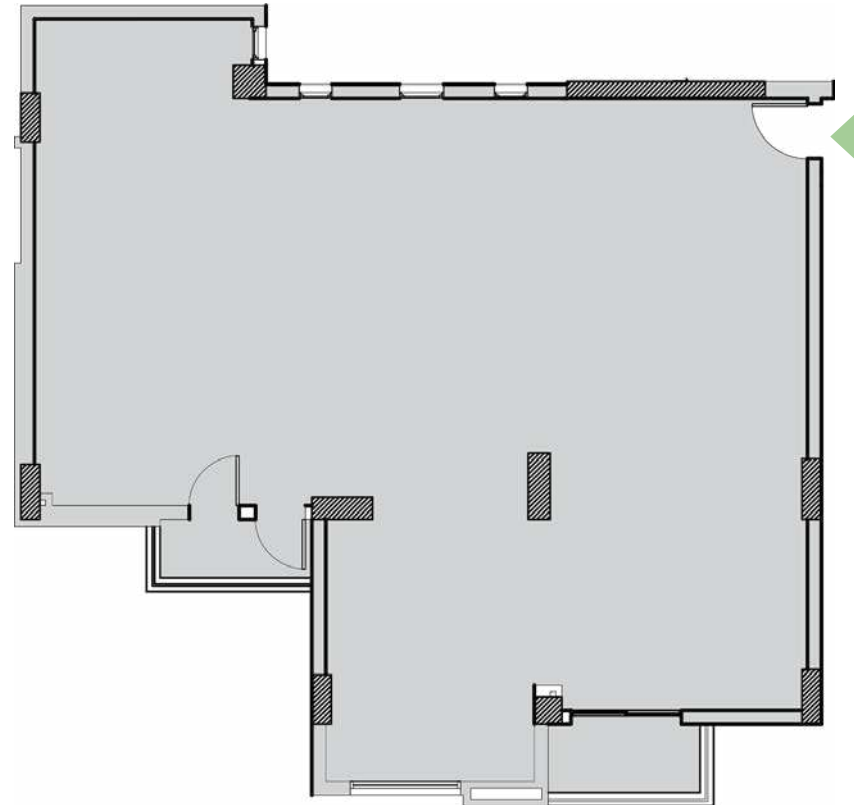
Proposal Design



Unit D & A - Typical
Total Area 220 m²



Proposal Design





TYPE B
(SPACE ONLY)

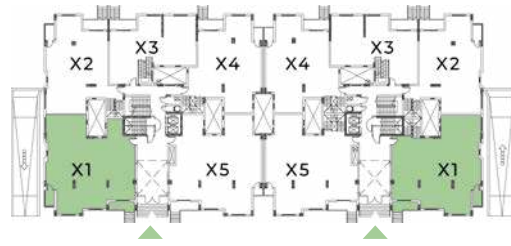
THE JUNGLE



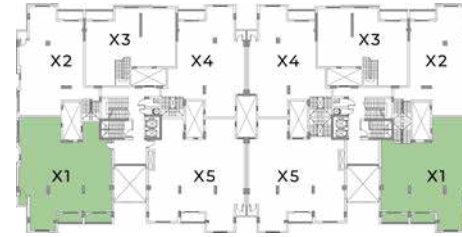
Unit X1 - Duplex
Total Area 505 m²



Proposal Design



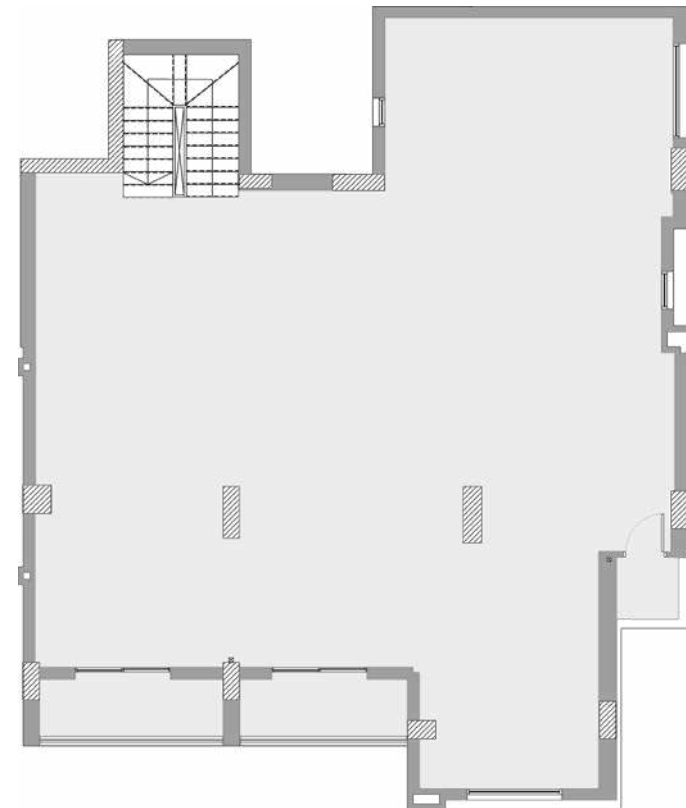
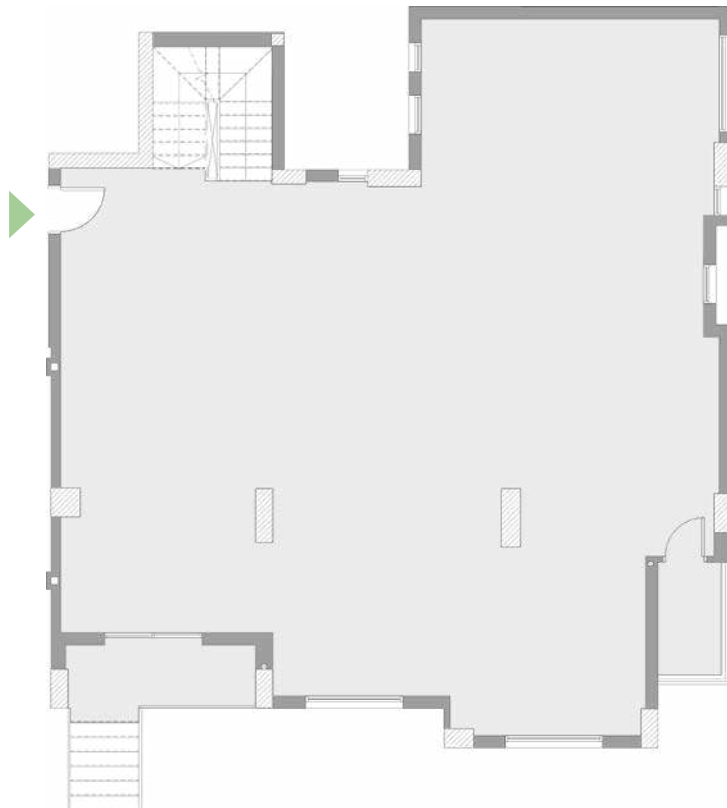
Ground Floor



First Floor



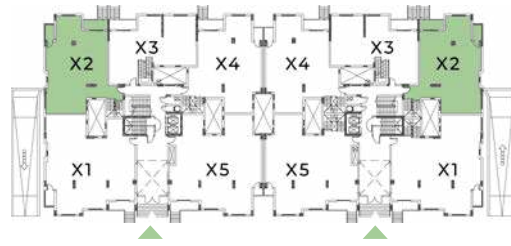
Proposal Design



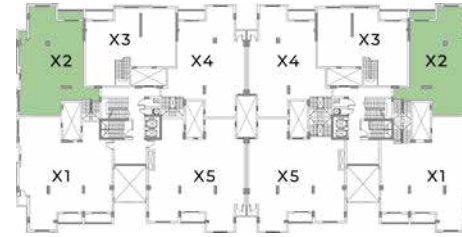
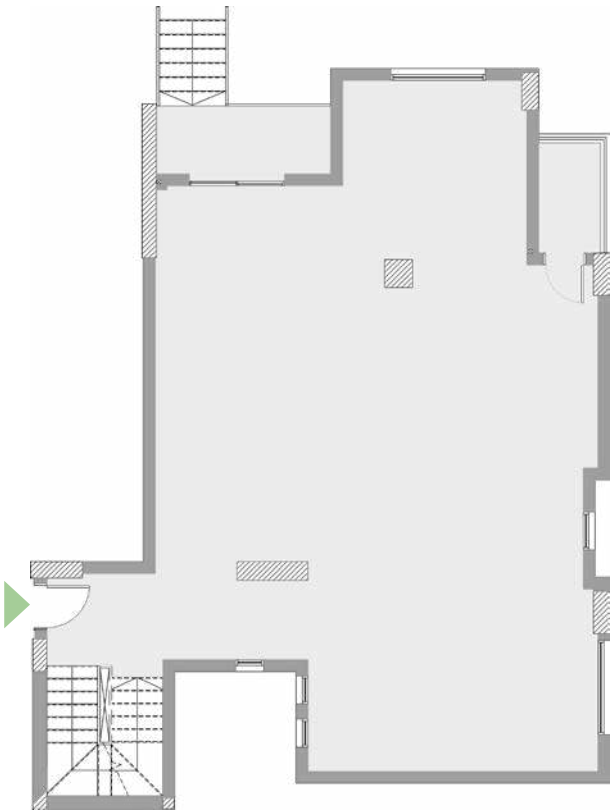
Unit X2 - Duplex
Total Area 390 m²



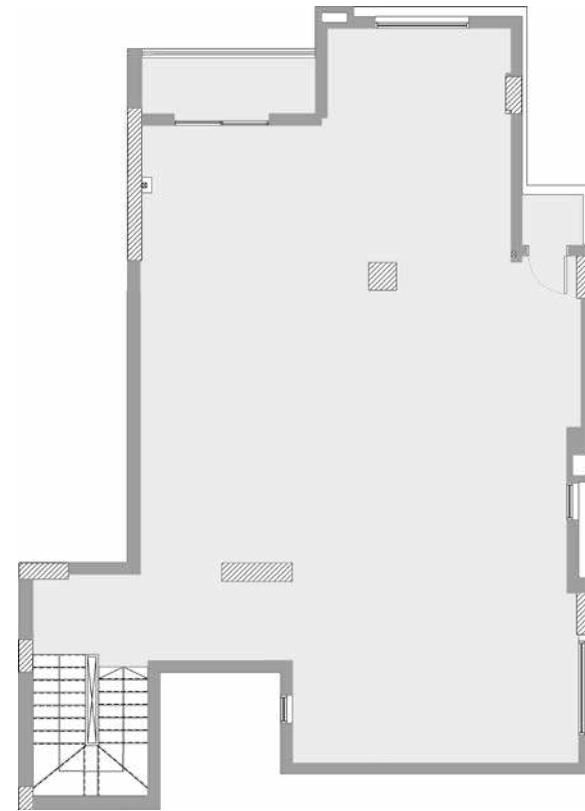
Proposal Design



Ground Floor



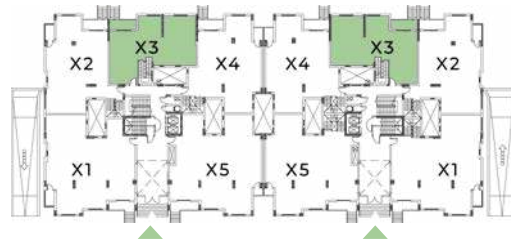
First Floor



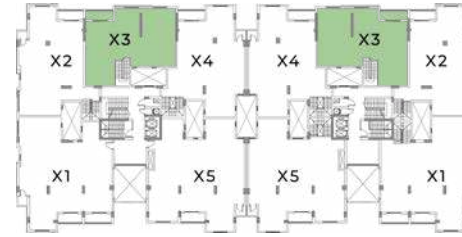
Proposal Design



Unit X3 - Duplex
Total Area 330 m²



Ground Floor



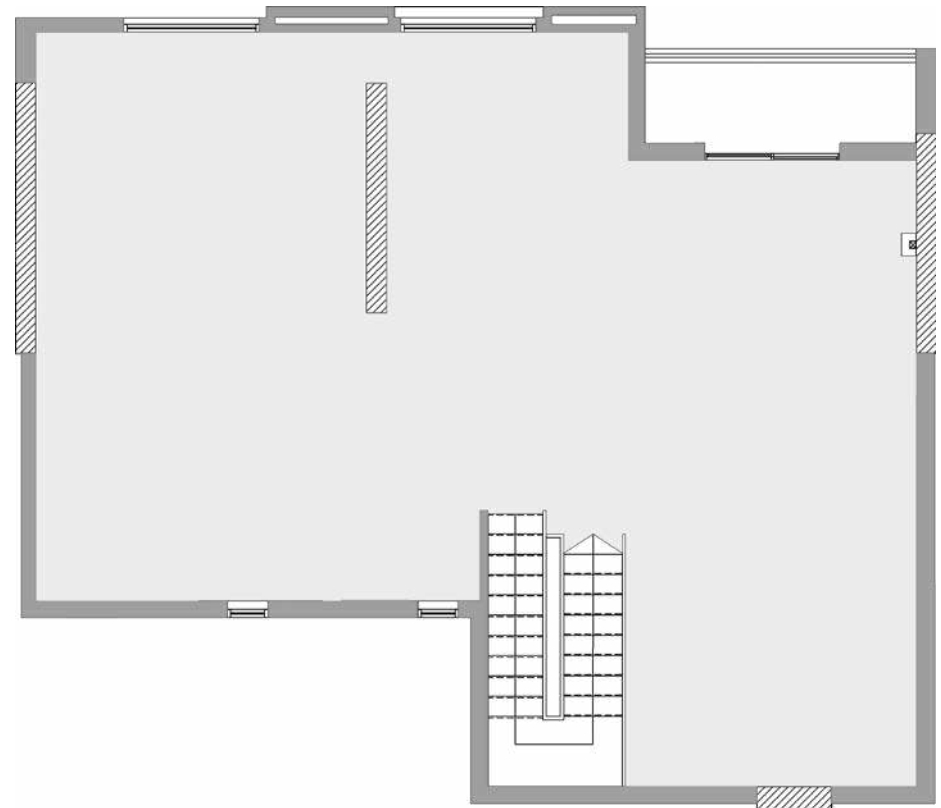
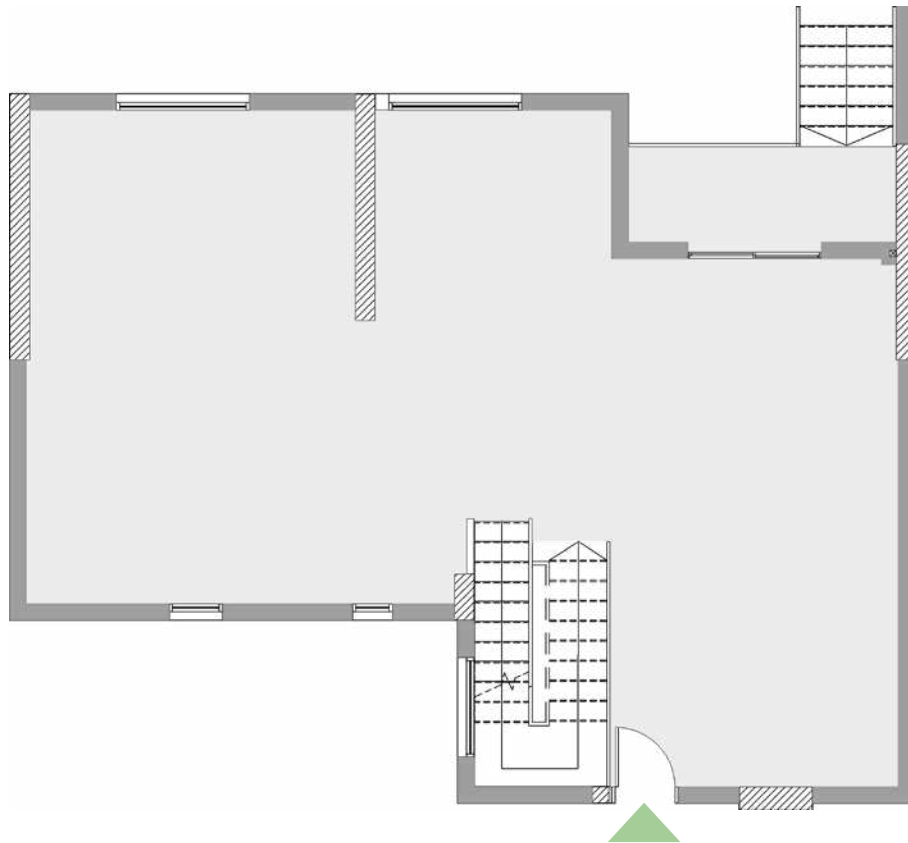
First Floor



Proposal Design



Proposal Design



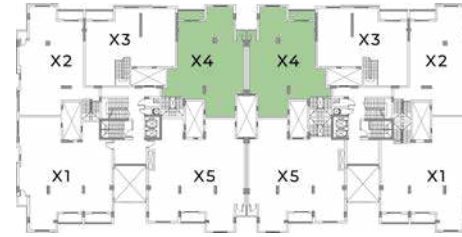
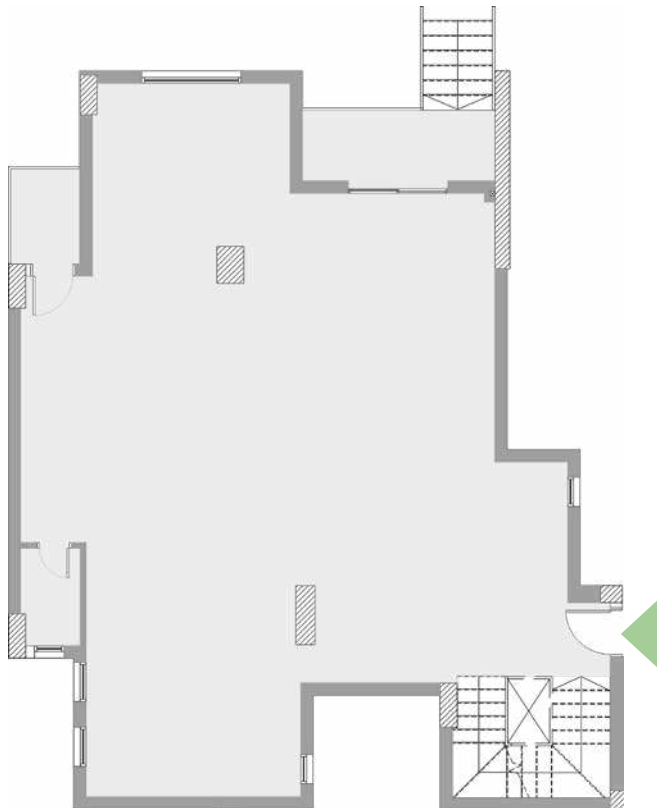
Unit X4 - Duplex
Total Area 405 m²



Proposal Design

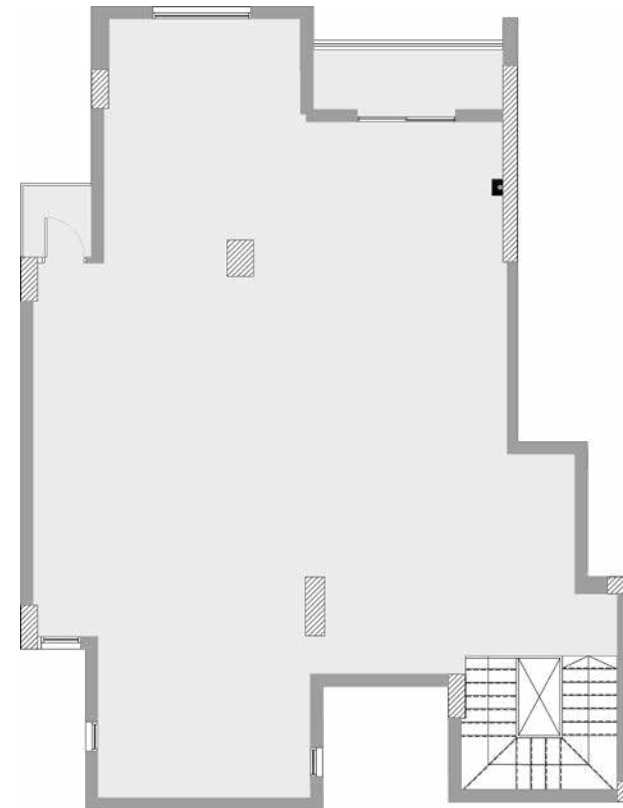
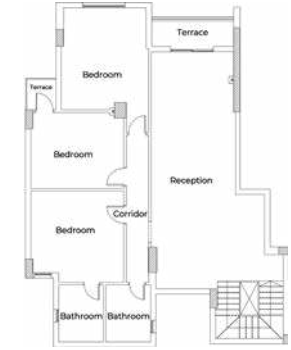


Ground Floor



First Floor

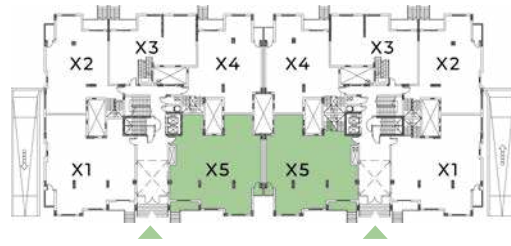
Proposal Design



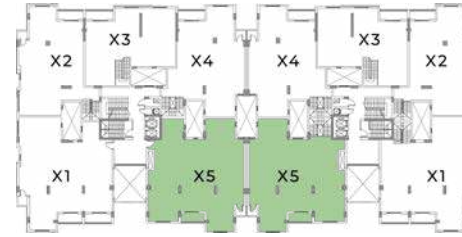
Unit X5 - Duplex
Total Area 505 m²



Proposal Design



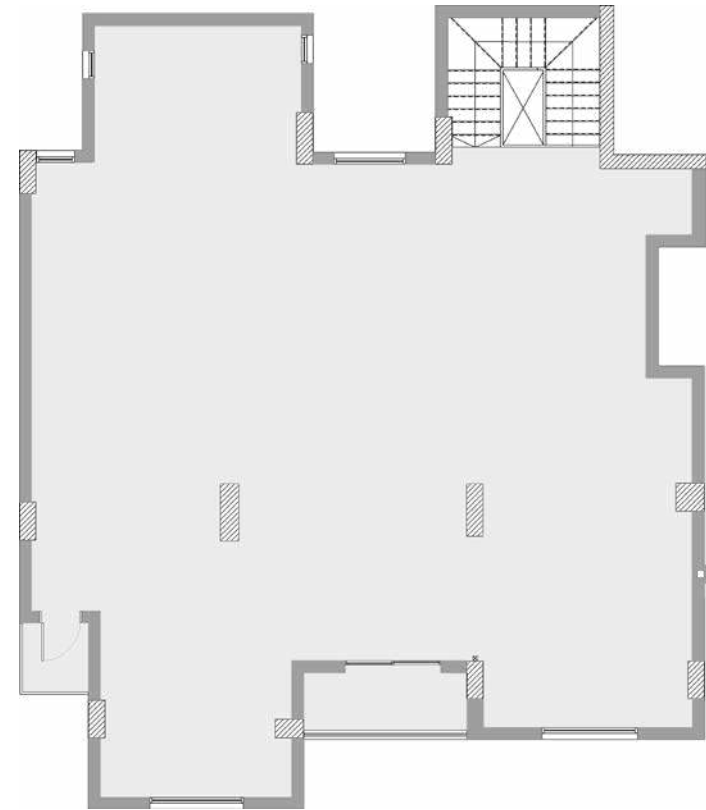
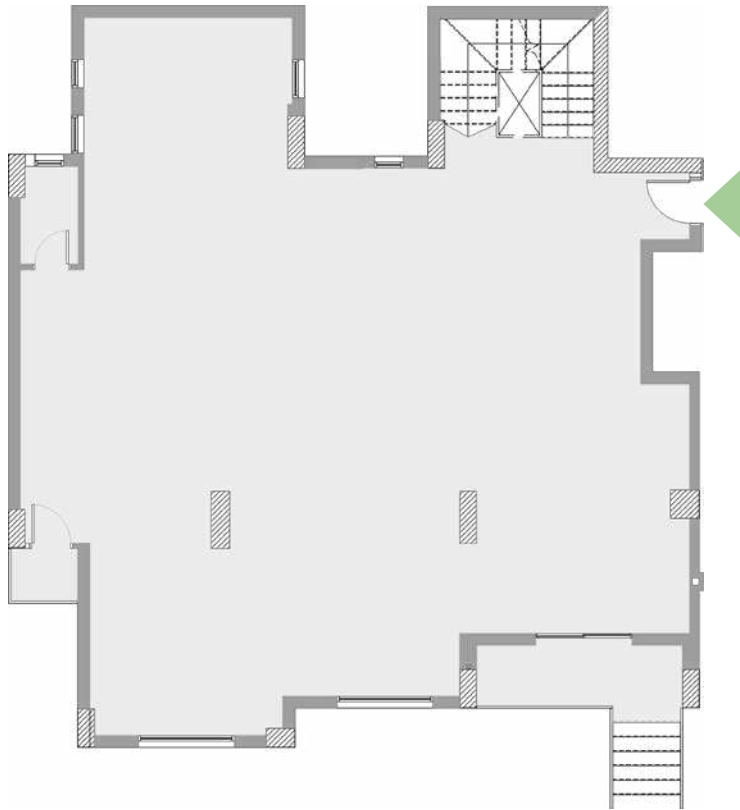
Ground Floor



First Floor



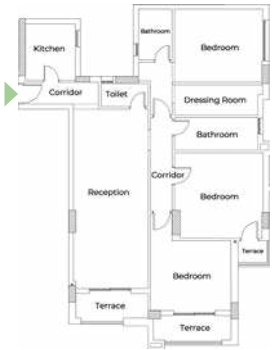
Proposal Design



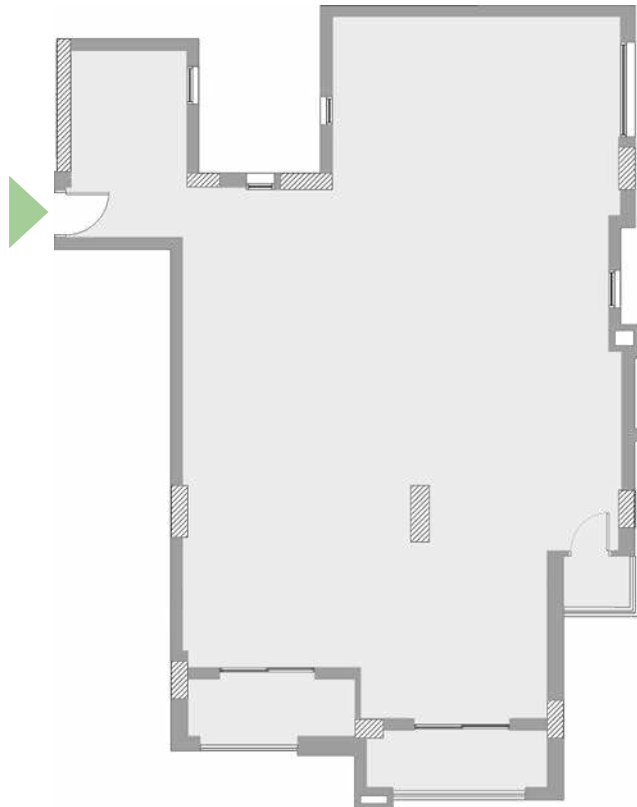
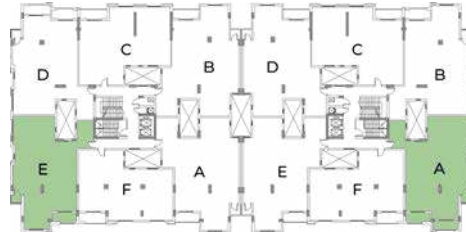


THE JUNGLE

Unit A & E - Typical
Total Area 200 m²



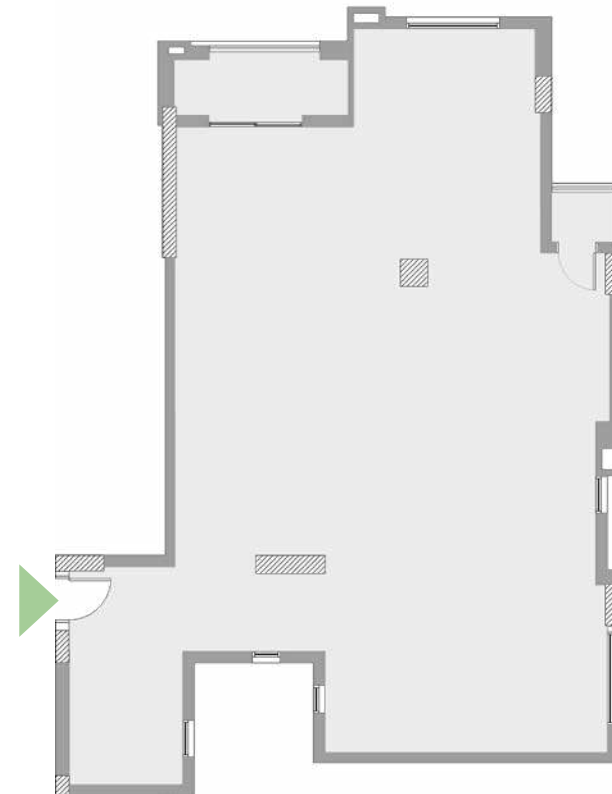
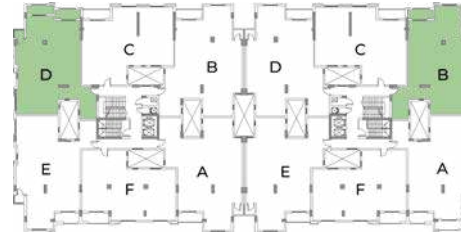
Proposal Design



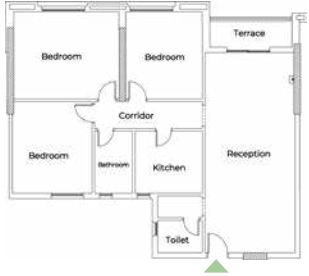
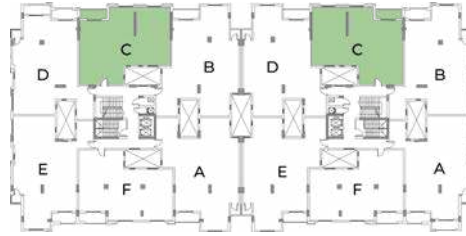
Unit B & D - Typical
Total Area 200 m²



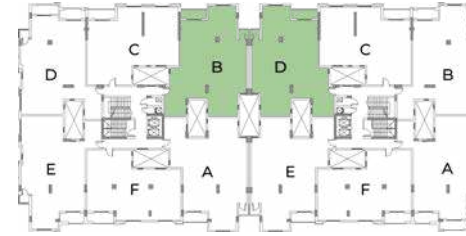
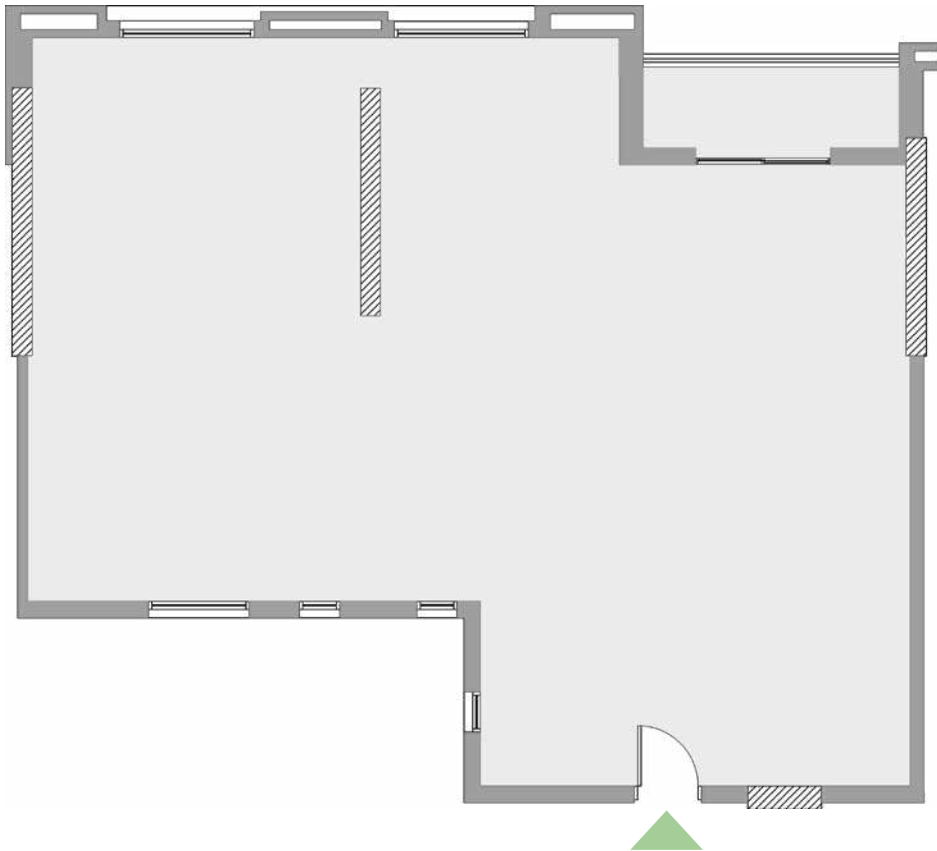
Proposal Design



Unit C - Typical
Total Area 160 m²



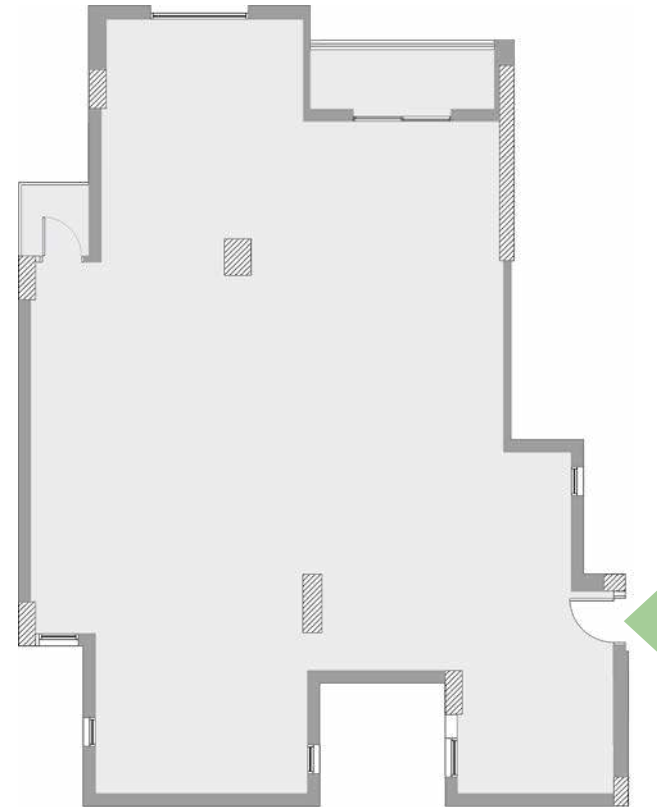
Proposal Design



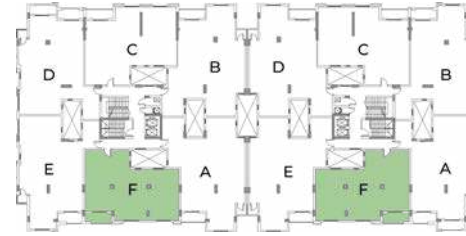
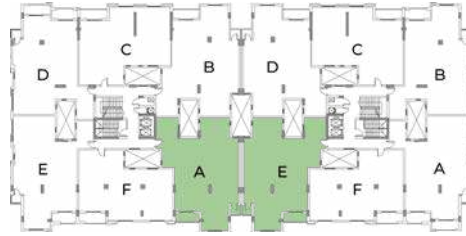
Unit D & B - Typical
Total Area 200 m²



Proposal Design



Unit E & A - Typical
Total Area 200 m²

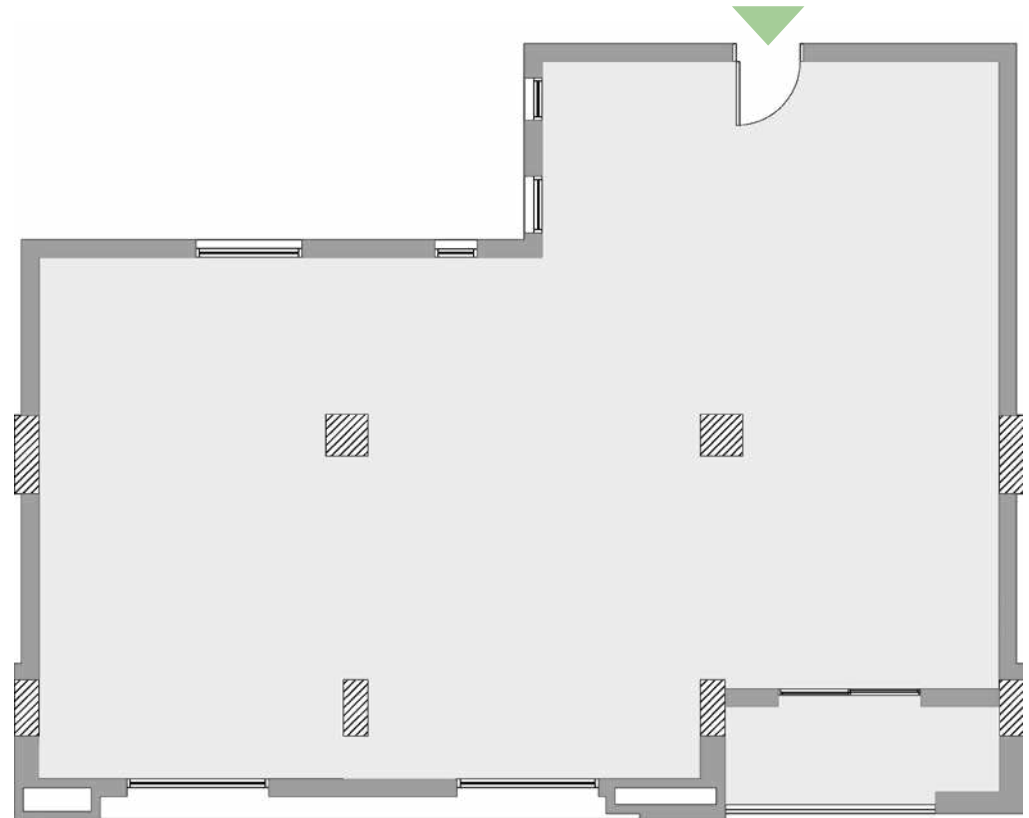
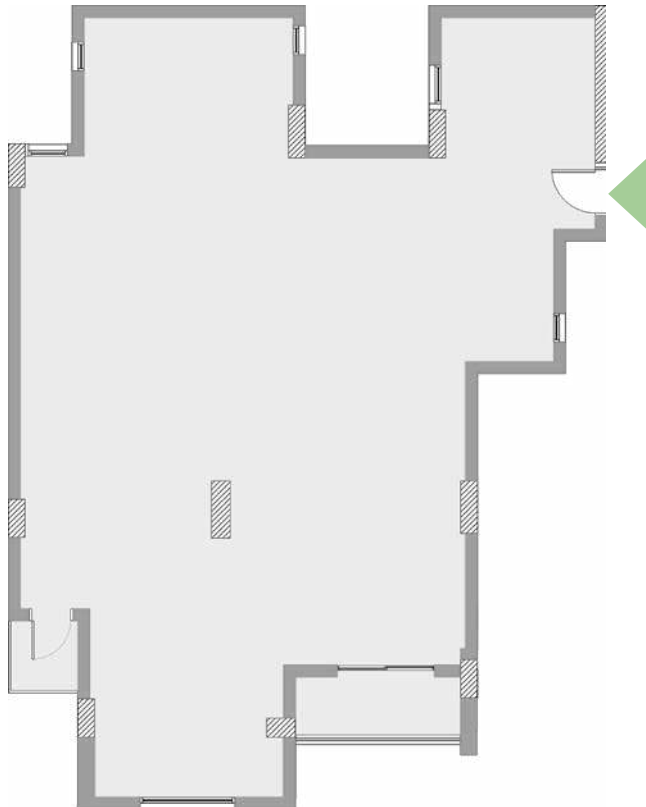


Unit F - Typical
Total Area 160 m²



Proposal Design

Proposal Design





TYPE B'
(SPACE ONLY)

THE JUNGLE



Unit X1 - Duplex
Total Area 505 m²



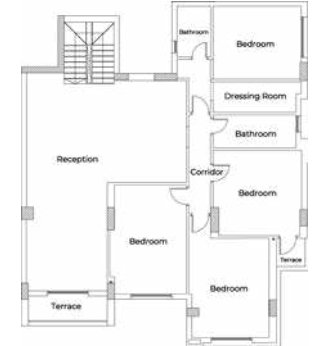
Ground Floor



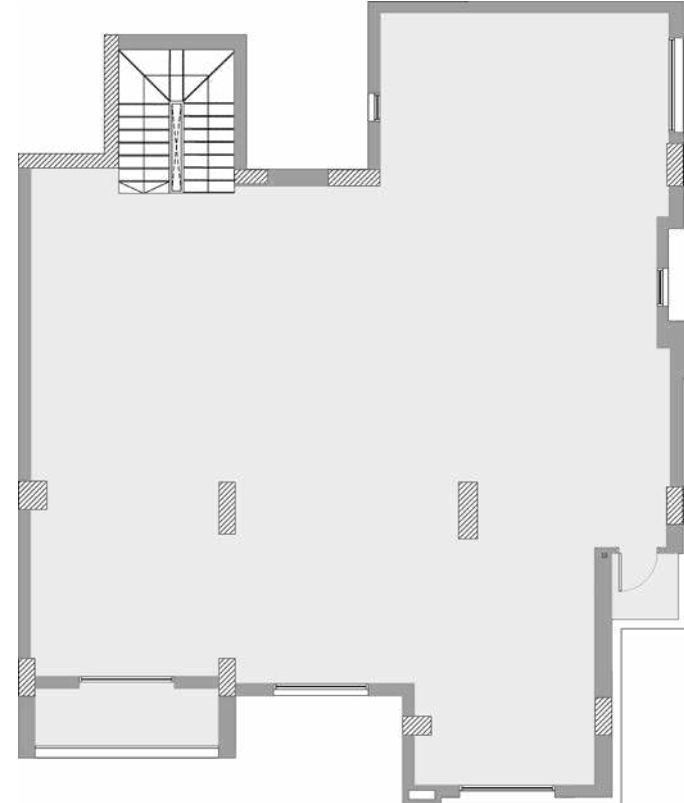
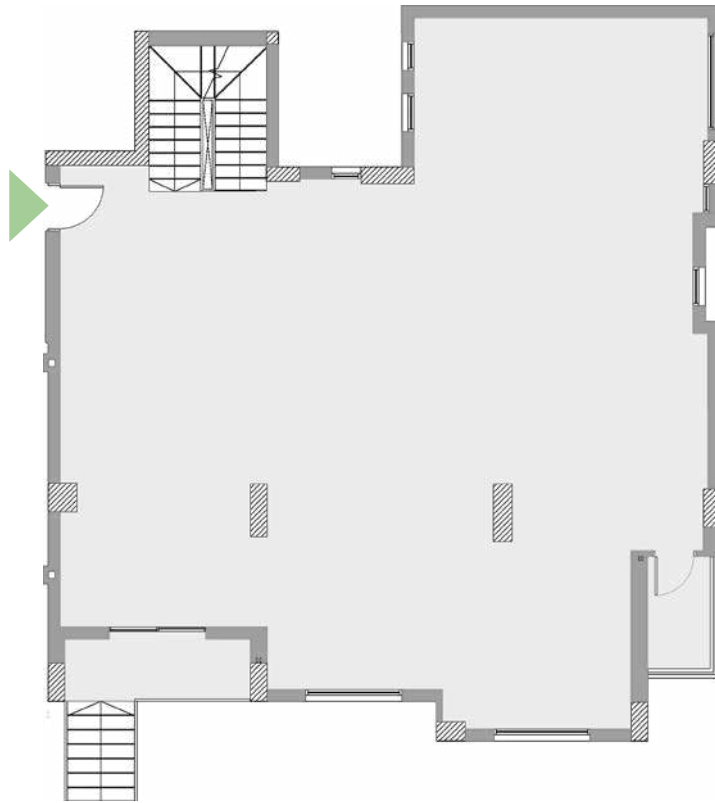
Proposal Design



First Floor



Proposal Design



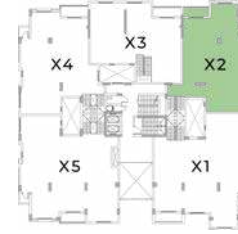
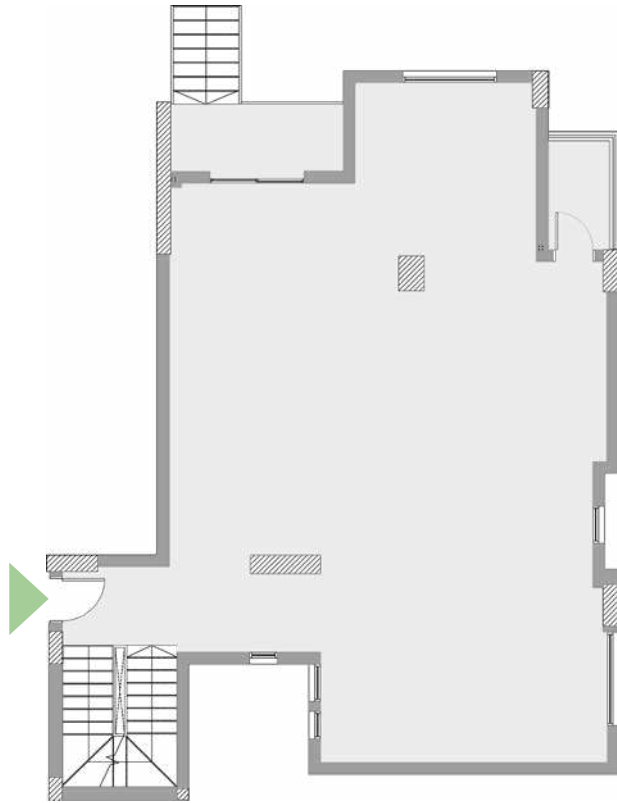
Unit X2 - Duplex
Total Area 390 m²



Ground Floor



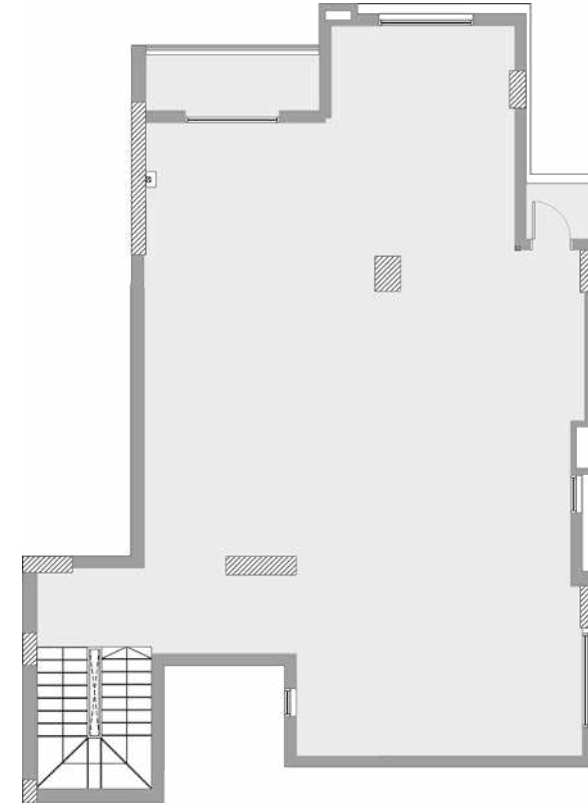
Proposal Design



First Floor



Proposal Design



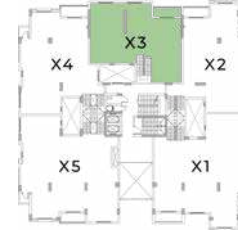
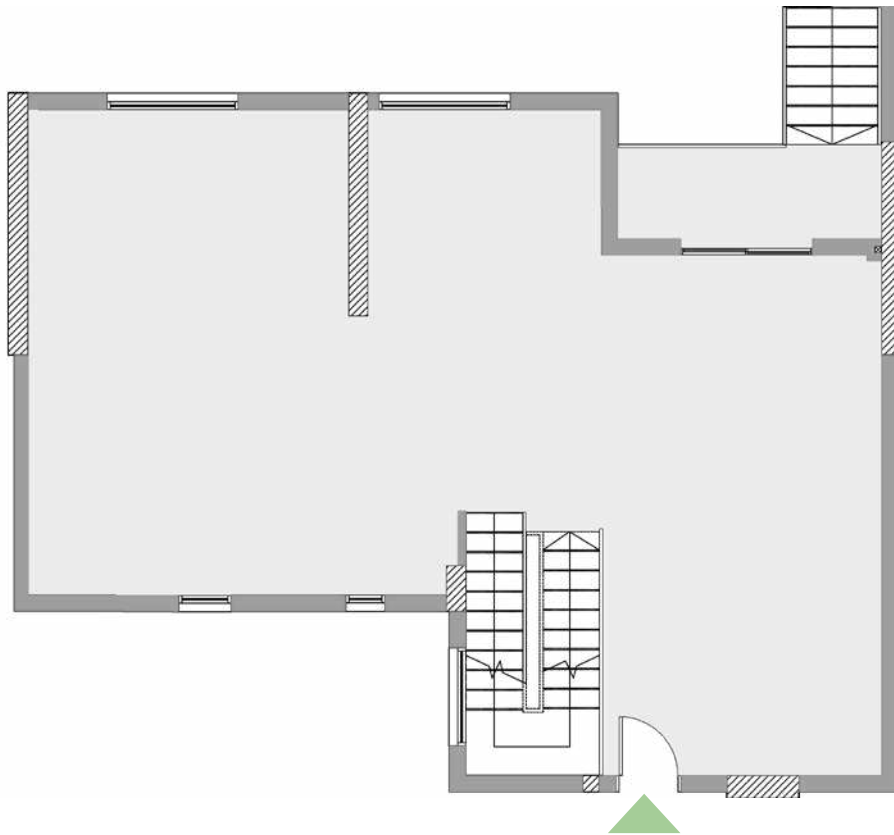
Unit X3 - Duplex
Total Area 330 m²



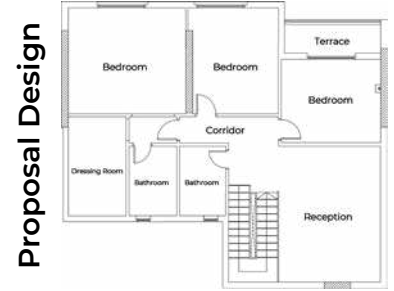
Ground Floor



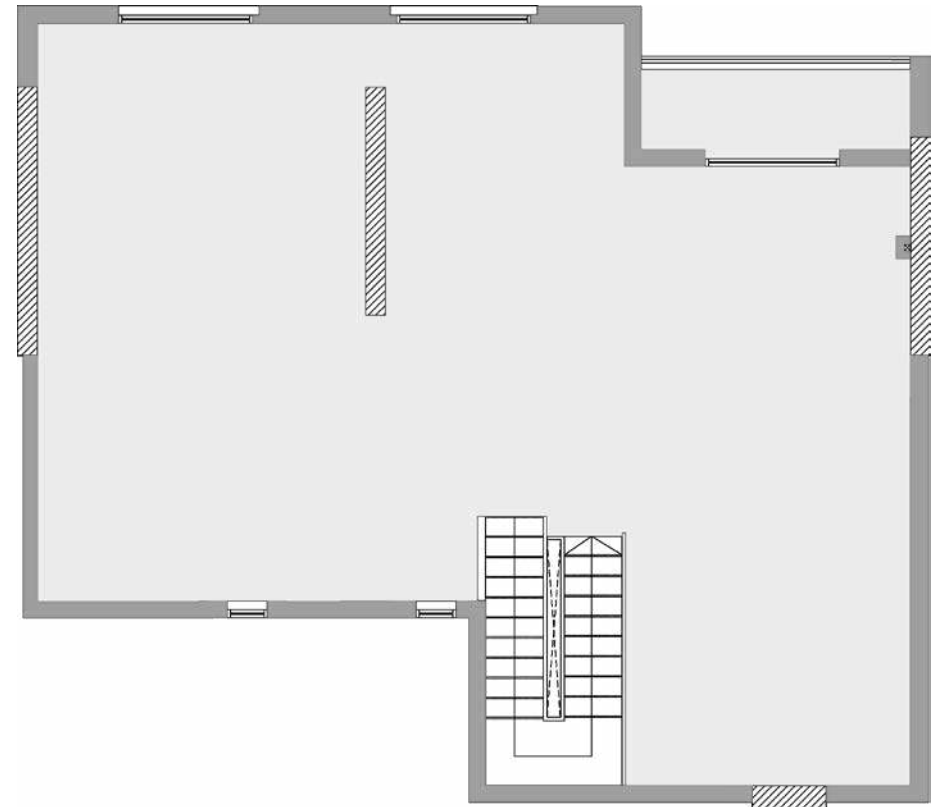
Proposal Design



First Floor



Proposal Design



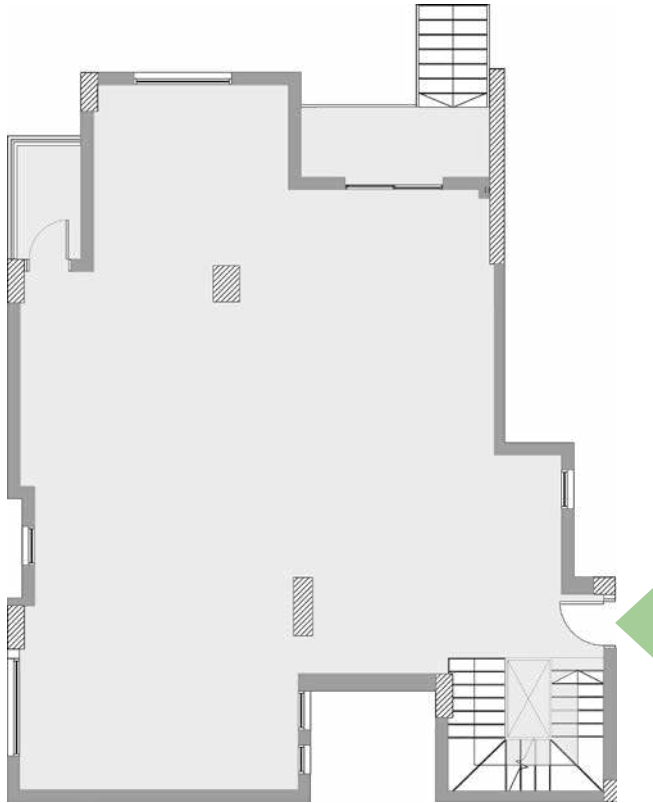
Unit X4 - Duplex
Total Area 405 m²



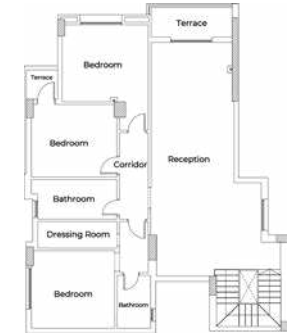
Ground Floor



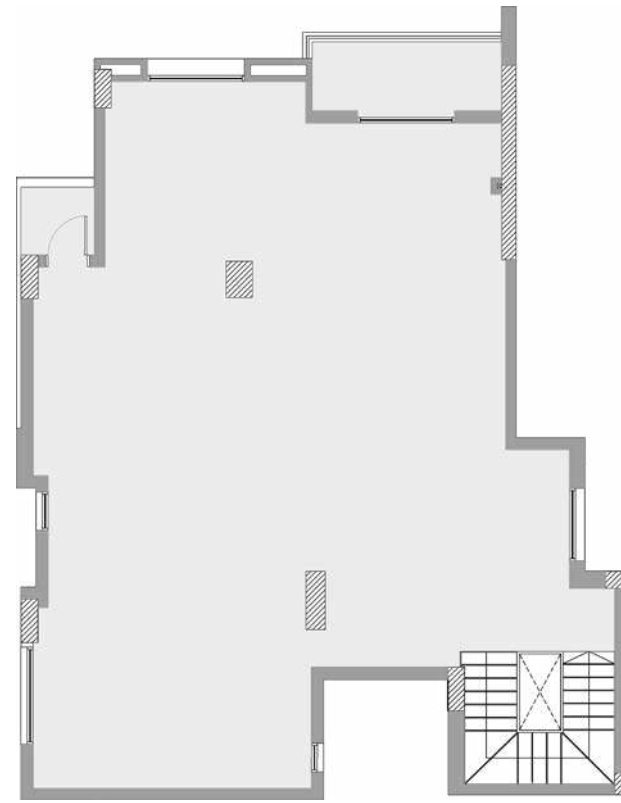
Proposal Design



First Floor



Proposal Design



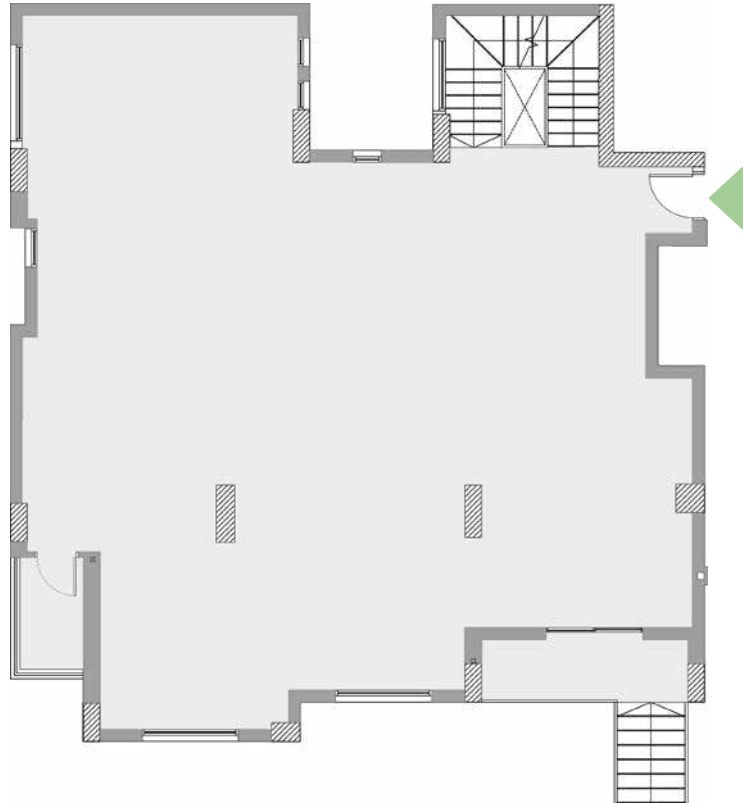
Unit X5 - Duplex
Total Area 505 m²



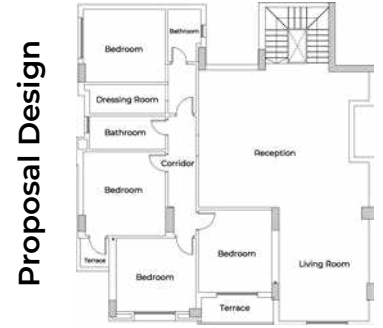
Proposal Design



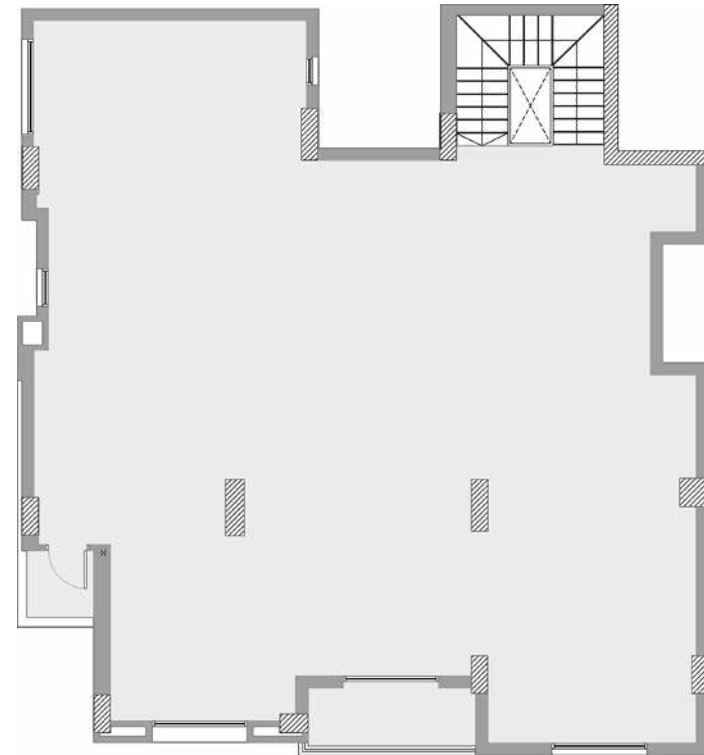
Ground Floor



First Floor



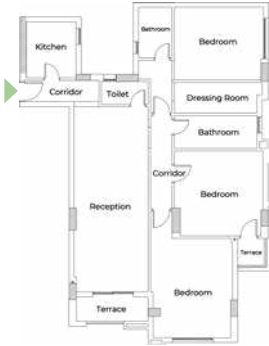
Proposal Design



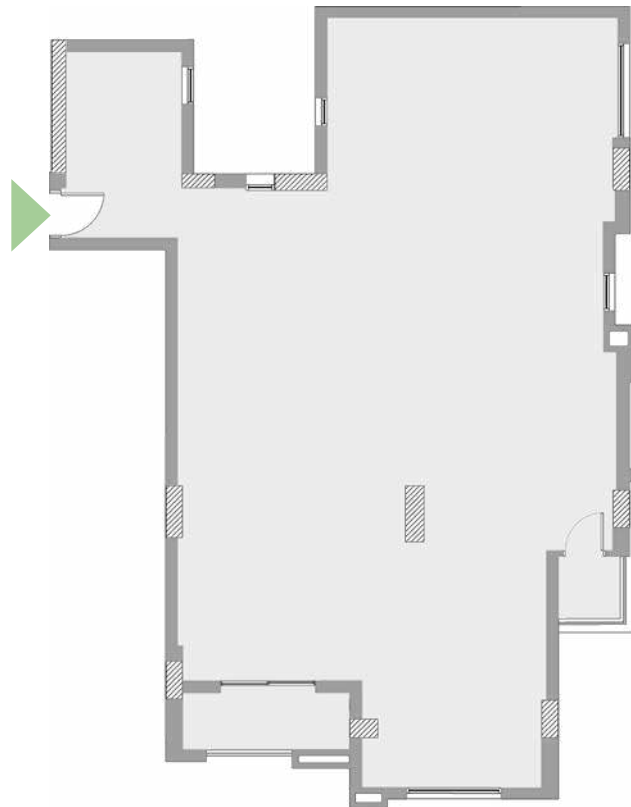


THE JUNGLE

Unit A - Typical
Total Area 200 m²



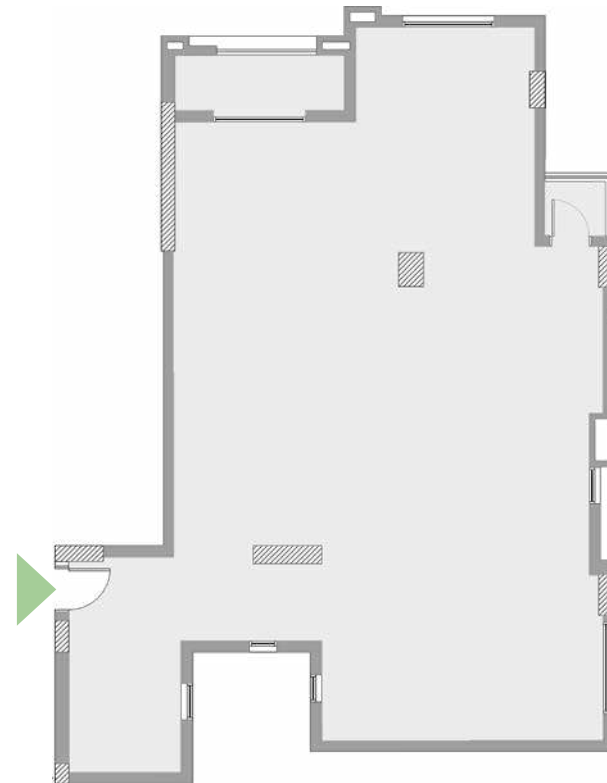
Proposal Design



Unit B - Typical
Total Area 200 m²

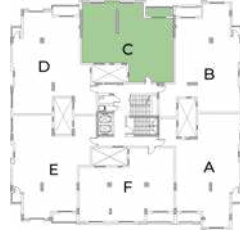


Proposal Design

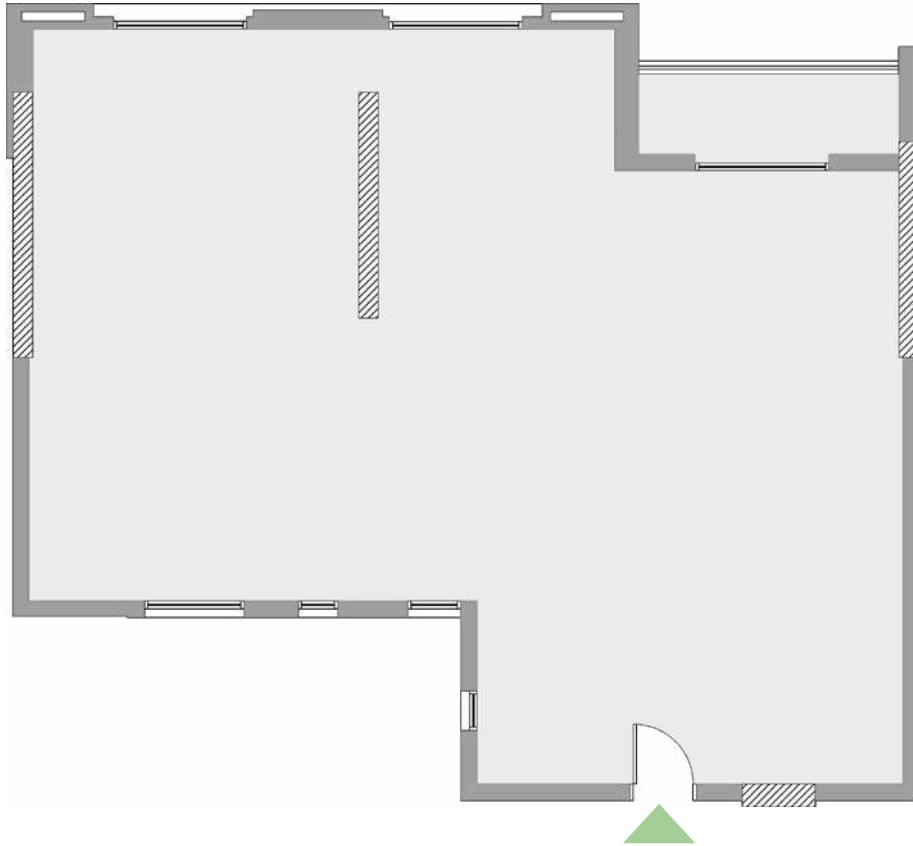


Unit C - Typical

Total Area 160 m²

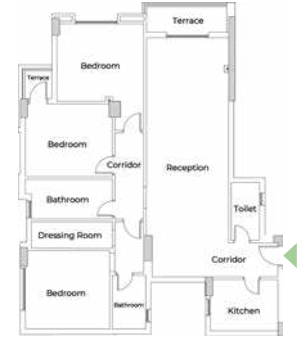


Proposal Design

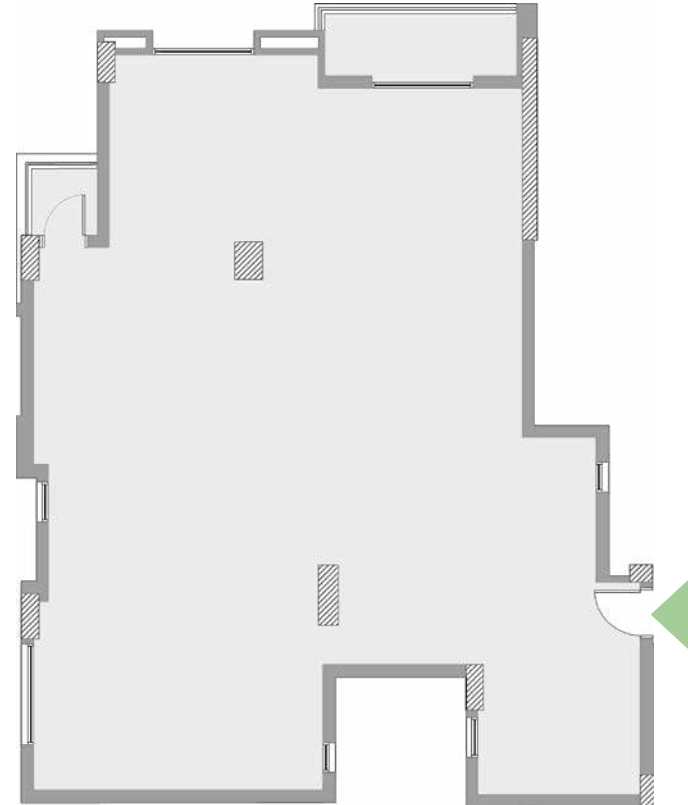


Unit D - Typical

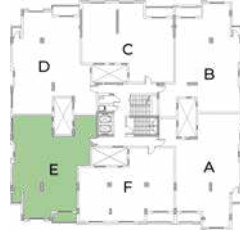
Total Area 200 m²



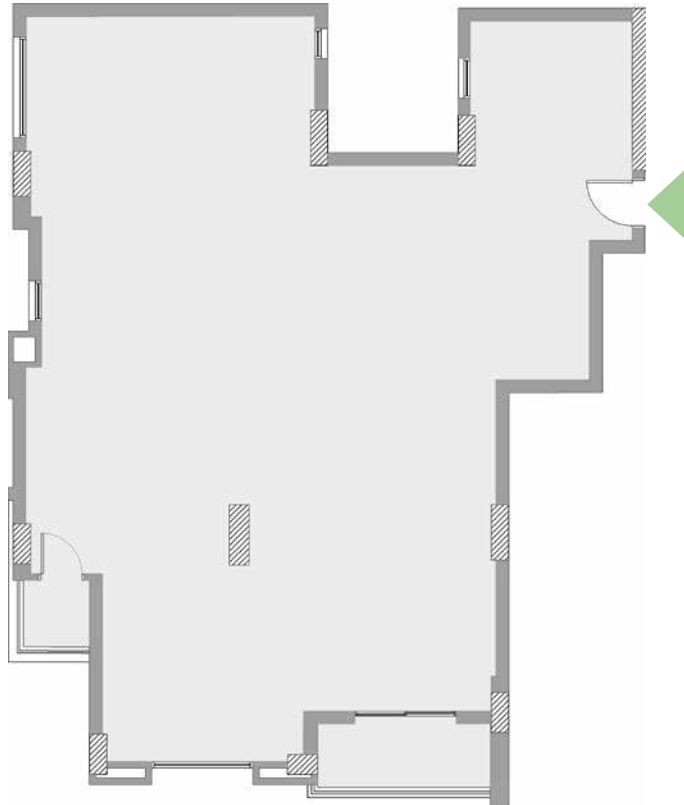
Proposal Design



Unit E - Typical
Total Area 200 m²

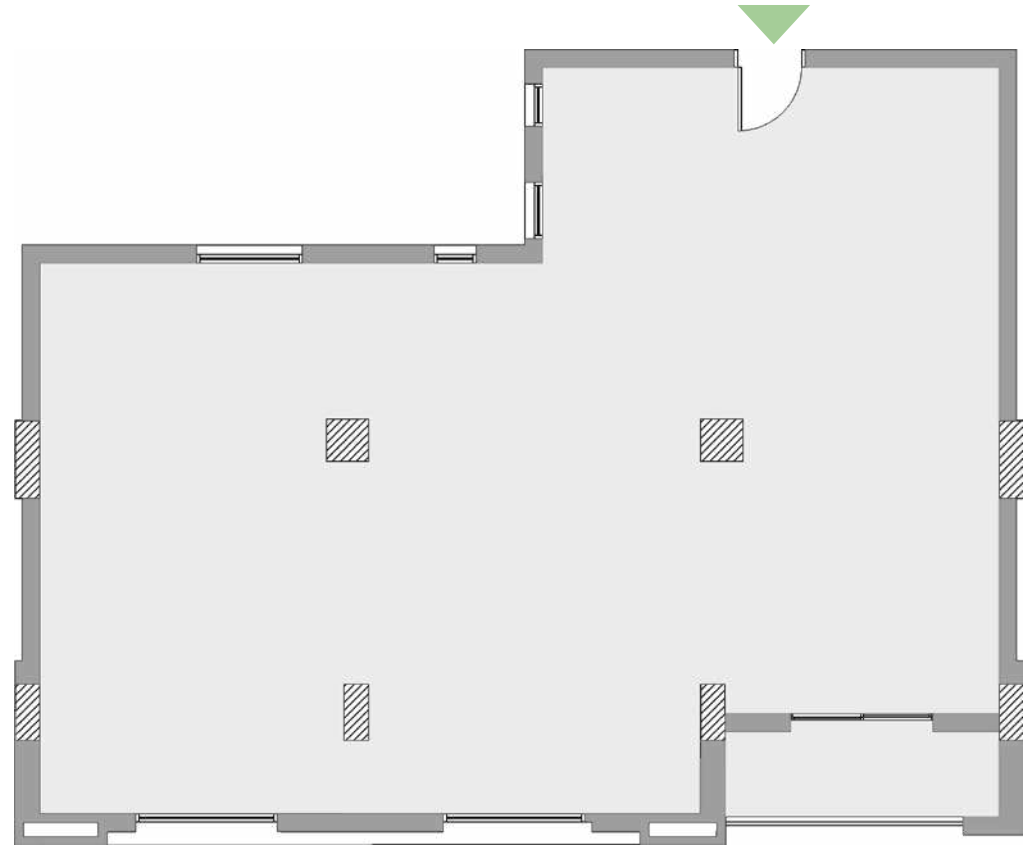


Proposal Design



Unit F - Typical
Total Area 160 m²

Proposal Design





THE JUNGLE

About SUD

Safwa Urban Development is a leading Egyptian Urban Development Company, Established in 1996. We start every project with one goal in mind, which is taking the lead in creating upscale communities that provide utmost privacy, maximum security and substantial comfort.

Through all of our Urban Development projects that include Resorts, advanced residential communities, shopping centers as well as medical, educational and sports facilities, we've managed to make an architectural fusion between contemporary and traditional designs, a feature that has become a trademark of ours. Inspired by years of customers' trust comes our motto, and our name has become associated with « your safe investment ». We've always been striving to live up to our customers' expectations and to earn their trust, because we consider our customer to be our most important asset.

الصفوة للتطوير العمراني

الصفوة للتطوير العمراني هي شركة مساهمة مصرية، تم تأسيسها عام ١٩٩٦م لتصبح واحدة من كبرى الشركات الرائدة في مجال التطوير العمراني في جمهورية مصر العربية. نعمل بكل كد واضعين نصب أعيننا دائماً هدفاً أسمى لم يغب يوماً عنّا وهو أن تكون لنا الريادة في خلق مجتمعات راقية تساهم في توفير الخصوصية والأمان والراحة القصوى لعملائنا. تتنوع مشاريعنا العقارية ما بين المنتجعات السياحية والمجتمعات السكنية المتطورة والمراكز التجارية والمشاريع الطبية والتعليمية والرياضية، وتتميز جميعها بالمزج ما بين الحداثة والأصالة في نفس الوقت وقد أصبح ذلك إحدى السمات المميزة لنا. ومن ثقة عملائنا الاستثمار معنا طوال هذه الأعوام استقيننا شعارنا، فارتبط اسم الصفوة للتطوير العمراني بـ « استثمارك الآمن » فكُنّا وما زلنا علي قدر ثقة عملائنا الغالية وكان إرضائهم هو حقاً رأس مالنا الحقيقي.





☎ 19315